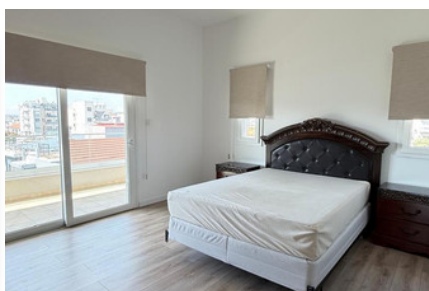
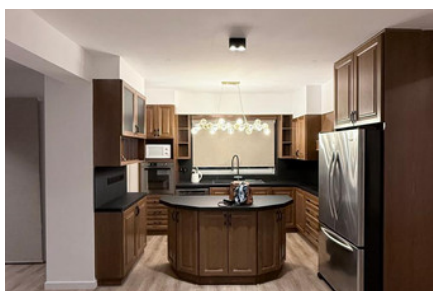
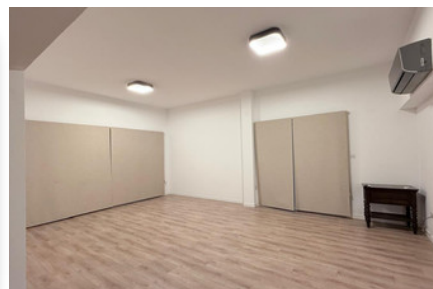


MODERN PENTHOUSE APARTMENT IN CITY CENTER - 4 BEDROOM

#2760

€3,300 / МЕСЯЦ

€3,500



 Спальни: 4

 Ванные комнаты: 3

 Общая площадь: 160m²

 Крытая веранда: 39m²

 Статус: Key ready

 Этаж: Penthouse



Grigori Afxentiou 8A,
4005, Mesa Geitonia
Limassol

sales@quastilo.com
+357 95 727 000
quastilo.com



P R O P E R T Y F O R R E N T

MODERN PENTHOUSE APARTMENT IN CITY CENTER - 4 BEDROOM

ОБЗОР

 Limassol, City Center  Apartment # 2760

ОПИСАНИЕ

Available for rent is a spacious apartment building in City Center, Limassol, between Agias Fylaxeos, Makariou and Makedonias street. Offering comfort and convenience for residences and offices. This key-ready property spans an impressive 160 square meters of internal space, ensuring plenty of room for everyone. Featuring 4 well-sized bedrooms, en-suite in the master bedroom, open plan kitchen, living and dining area, main bathroom and guest toilet. Verandas in every room and large windows fill the interiors with natural light, creating a warm and inviting atmosphere throughout.

Situated in a lively and well-established area known for its friendly community and excellent local services. Schools, shops, cafes, and parks are all within easy reach, making this location ideal for offices or families, professionals, or companies seeking staff accommodation. Excellent transport connections allow for quick access to nearby city attractions and business centers. This property is offered by Quastilo, who pride themselves on delivering top-quality rentals in prime locations. Contact Quastilo today to arrange a viewing!

УДОБСТВА

Aircondition, Split system	Parking, Covered	Elevator
Storage	Solar water heater	

ХАРАКТЕРИСТИКИ

Thermal insulation	Easy access to main roads	Fitted wardrobes
Double glazing	Guest WC	Veranda
Roller blinds	En suite shower	Near amenities



Grigori Afxentiou 8A,
4005, Mesa Geitonia
Limassol

sales@quastilo.com
+357 95 727 000
quastilo.com



P R O P E R T Y F O R R E N T