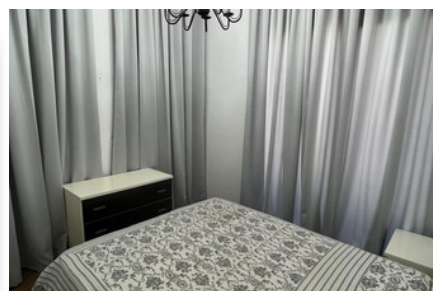
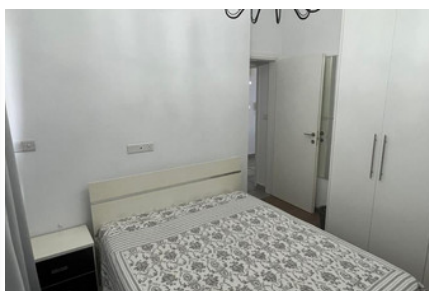
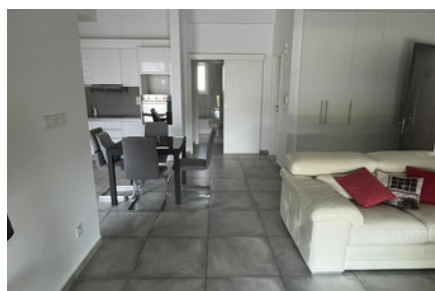
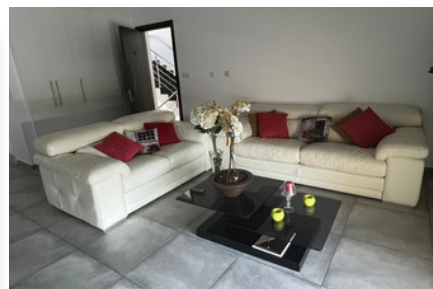
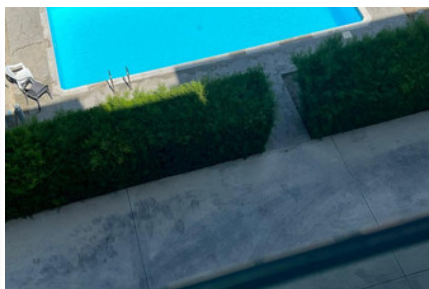
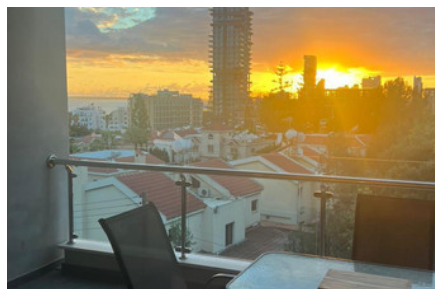


PENTHOUSE APARTMENT  
IN GERMASOGEIA,  
TOURIST AREA - 2  
BEDROOM

#2729

€1,900 /МЕСЯЦ



 Спальни: 2

 Ванные комнаты: 2

 Общая площадь: 80m<sup>2</sup>

 Крытая веранда: 30m<sup>2</sup>

 Статус: Used

 Рейтинг энергоэффективности: A



Grigori Afxentiou 8A,  
4005, Mesa Geitonia  
Limassol

sales@quastilo.com  
+357 95 727 000  
quastilo.com



P R O P E R T Y F O R R E N T

# PENTHOUSE APARTMENT IN GERMASOGEIA, TOURIST AREA - 2 BEDROOM

## ОБЗОР



Limassol, Agios Tychon Tourist Area



Apartment



2729

## ОПИСАНИЕ

Available for rent this penthouse apartment offers total 110 m<sup>2</sup> of comfortable living space and verandas. The property features two well-proportioned bedrooms and two bathrooms, making it ideal for families or professionals needing extra space. Located in the vibrant Agios Tychonas, Tourist Area, the residents can enjoy an excellent quality of life. This neighborhood is known for its lively atmosphere, beautiful beaches, popular restaurants, shops, and entertainment options, all within walking distance. Excellent transport links make commuting convenient, while parks and leisure facilities are also nearby. All essential amenities, including supermarkets, schools, and clinics, are close at hand.

The property is fully furnished, with electrical appliances, common pool and ready to be your new home!!!

This apartment is advertised by Quastilo, ensuring professional service and a straightforward rental process.

## УДОБСТВА

Aircondition, Split system

Parking, Covered

Elevator

Solar water heater

## ХАРАКТЕРИСТИКИ

Fitted wardrobes

Veranda

Quiet area

Walking distance to beach

Near amenities

## РАССТОЯНИЯ

**Amenities:** 100 m

**Airport:** 50 km

**Sea:** 500 m

**Public transport:** 100 m

**Schools:** 1 km

**Resort:** 500 m



Grigori AFxentiou 8A,  
4005, Mesa Geitonia  
Limassol

sales@quastilo.com  
+357 95 727 000  
quastilo.com



P R O P E R T Y F O R R E N T