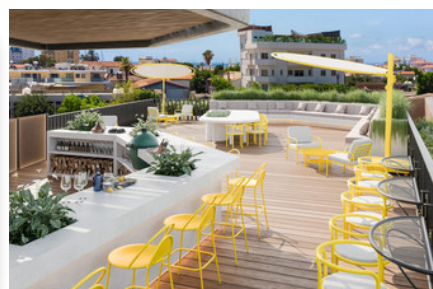
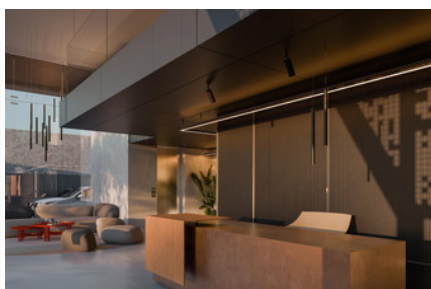
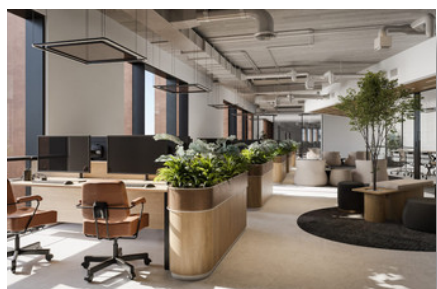
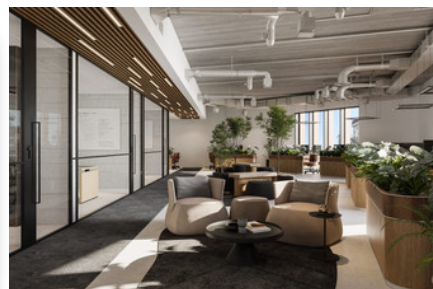
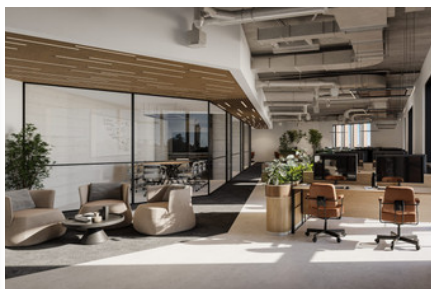
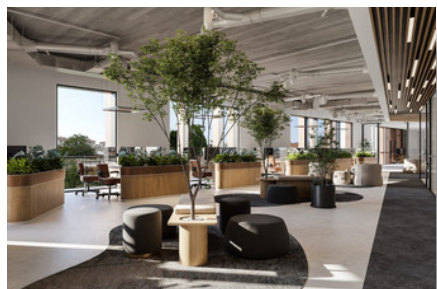


A STATE-OF-THE-ART
COMMERCIAL BUILDING
- 980M²

#2660

€4,800,000 +
НДС



Общая площадь: 980m²



Статус: Under construction



Grigori Afxentiou 8A,
4005, Mesa Geitonia
Limassol

sales@quastilo.com
+357 95 727 000
quastilo.com



P R O P E R T Y F O R S A L E

A STATE-OF-THE-ART COMMERCIAL BUILDING - 980M²

ОБЗОР



Limassol, City Center



Commercial Building



2660

ОПИСАНИЕ

Located in the historic heart of Old Limassol, merges contemporary architecture with traditional aesthetics. Limassol's Historical Center offers a unique blend of rich heritage and modern vibrancy, making it an ideal location for your business. Making use of a Corten steel façade, the building is a testament to thoughtful design and durability. Its most striking feature, the double-height ground floor lobby, welcomes visitors with a spacious and elegant entrance that showcases sleek vertical lighting and high ceilings, enhancing the open, airy feel. The interior continues the theme of refined modernity, incorporating minimalist designs with warm wooden accents and polished concrete, complemented by touches of greenery that promote a tranquil atmosphere. The expansive windows ensure ample natural light, which dynamically interacts with the internal space to create a lively yet peaceful environment. Functional and versatile, the project features multiple entrances to accommodate a range of business operations, with a rooftop garden that provides a serene escape for leisure and corporate events. Sustainability is a cornerstone of the design, evident in the inclusion of photovoltaic panels to reduce energy consumption. Combining innovative, eco-friendly design with a deep respect for its historical surroundings, this property not only serves the needs of modern businesses but also contributes significantly to the architectural and environmental landscape of Old Limassol.

Main features

- Central VrV Air-Condition System & Ventilation System
- Raised Floor System
- Photovoltaics & Net Metering
- Electric Vehicle Charge Station
- Superior Thermal Aluminum Sash & Curtain Wall Glazing
- Double Height Impressive Lobby - High Ceilings: +3m height
- Ambient Entrance Lighting
- Secured Entry & Face Recognition Entry Video Phone
- Interior Design Consultation
- Automated Gate for Parking Area

****Ground Floor 373 m²

***Mezannine 187 m²

***First Floor 420 m²

***Total (GF,MZ,1st) 980m²



Grigori AFxentiou 8A,
4005, Mesa Geitonia
Limassol

sales@quastilo.com
+357 95 727 000
quastilo.com



P R O P E R T Y F O R S A L E

***Roof Garden 287 m²

***Covered Roof Garden 65 m²

***Total (Roof) 352m²



Grigori Afxentiou 8A,
4005, Mesa Geitonia
Limassol

sales@quastilo.com
+357 95 727 000
quastilo.com



P R O P E R T Y F O R S A L E



Grigori Afxentiou 8A,
4005, Mesa Geitonia
Limassol

sales@quastilo.com
+357 95 727 000
quastilo.com



P R O P E R T Y F O R S A L E