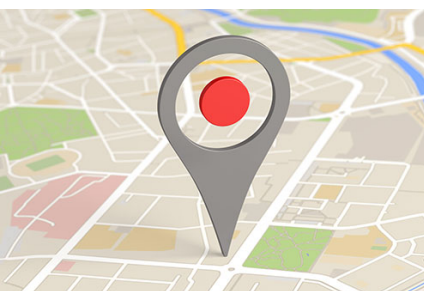
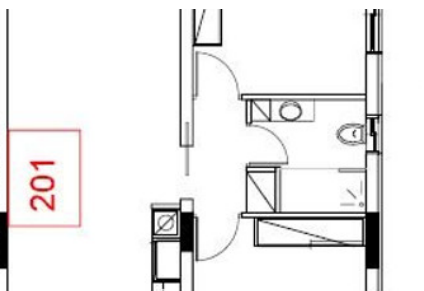


# MODERN APARTMENT IN PANTHEA - 2 BEDROOM

## #2644

### €290,000 + НДС



 Спальни: 2



Общая площадь: 92m<sup>2</sup>



Статус: Under construction



Grigori Afxentiou 8A,  
4005, Mesa Geitonia  
Limassol

sales@quastilo.com  
+357 95 727 000  
quastilo.com



P R O P E R T Y F O R S A L E

# MODERN APARTMENT IN PANTHEA - 2 BEDROOM

## ОБЗОР

 Limassol, Panthea  Apartment  2644

## ОПИСАНИЕ

Last available two-bedroom apartment under construction in the desirable area of Panthea/ Agia Fyla, Limassol. This property offers a comfortable covered area of 92 m<sup>2</sup>, featuring a spacious open-plan layout with high-quality finishes. The apartment includes two well-sized bedrooms, a stylish bathroom, and a contemporary kitchen designed for everyday living. The location offers quick access to the city center and surrounding areas. The neighborhood is family-friendly, with a variety of schools, supermarkets, cafes, and parks all within a short drive, making daily life easy and enjoyable.

This project is advertised by Quastilo. Contact us for more details and to arrange a viewing! If you are seeking a new home in a growing and well-connected area, this apartment provides an excellent opportunity for comfortable and modern living.

## УДОБСТВА

Aircondition, Split system

Parking, Covered

Elevator

Storage

Solar water heater

## ХАРАКТЕРИСТИКИ

Thermal insulation

Easy access to highway

Fitted wardrobes

Double glazing

Veranda

Quiet area

Rental potential

Modern design

Near amenities



Grigori Afxentiou 8A,  
4005, Mesa Geitonia  
Limassol

sales@quastilo.com  
+357 95 727 000  
quastilo.com



P R O P E R T Y F O R S A L E