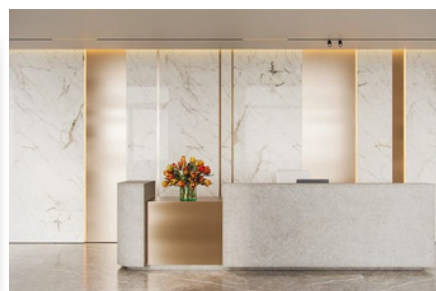
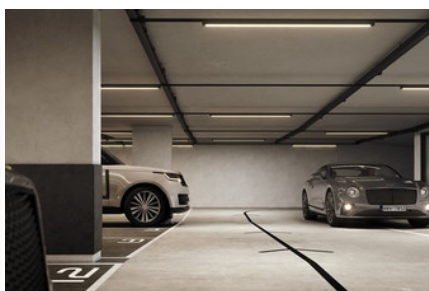
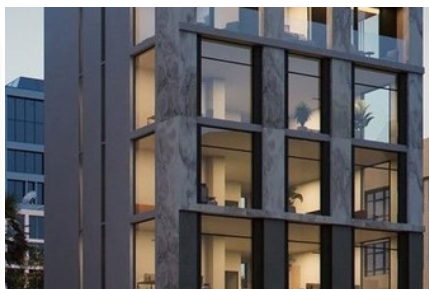


COMMERCIAL BUILDING
IN CITY CENTER

#2477

€7,000,000 +
НДС



Общая площадь: 1136m²



Участок: 527m²



Статус: Off plan



Grigori Afxentiou 8A,
4005, Mesa Geitonia
Limassol

sales@quastilo.com
+357 95 727 000
quastilo.com



P R O P E R T Y F O R S A L E

COMMERCIAL BUILDING IN CITY CENTER

ОБЗОР



Limassol, City Center



Commercial Building



2477

ОПИСАНИЕ

This commercial building is situated in the heart of Limassol on Agios Fylaxios street, Limassol, is a hub of entrepreneurial activity and professional collaboration. With its prime location offering stunning views of the bustling cityscape, this center is a magnet for both established businesses and startups seeking a prestigious and convenient workspace. The building, spanning 1897m², is a contemporary commercial property that offers a comprehensive and functional layout for businesses. With a thoughtfully designed structure, it caters to modern needs while ensuring ample space, ease of access, and flexibility for various business purposes. Includes a two-level underground parking facility. This feature provides a convenient and secure space for parking of 18 cars, ensuring the building is easily accessible to both employees and visitors. Each office has its own storage room. Upon entering the building, you're welcomed into a spacious, inviting lobby. Above the lobby, the building comprises six floors of open-space office areas. These floors are presented in a "shell core" condition, allowing for maximum flexibility and customization according to the needs and preferences of the new owner. The open-space design provides a blank canvas for future occupants to configure the layout, partitions, and amenities to suit their specific requirements and cater to a variety of businesses, from tech startups to consultancy firms. Large windows line the front exterior of the building, allowing abundant natural light to flood the space and offering inspiring views of the city skyline. The shell core condition includes essential infrastructure components such as elevator, electrical connections and plumbing. This basic infrastructure provides a solid foundation for further development and enables a smooth transition to a fully operational office space. Don't miss the opportunity to establish your business in this prime location. Contact Quastilo for more details and to arrange a viewing.

Characteristics:

- Plot size: 527m²
- 6 floors
- Total floor area: 1897m²
- Total office area: 913m²
- Spacious lobby of 83m²
- Two-level underground parking 761m² for 18 cars

УДОБСТВА



Grigori AFxentiou 8A,
4005, Mesa Geitonia
Limassol

sales@quastilo.com
+357 95 727 000
quastilo.com



P R O P E R T Y F O R S A L E