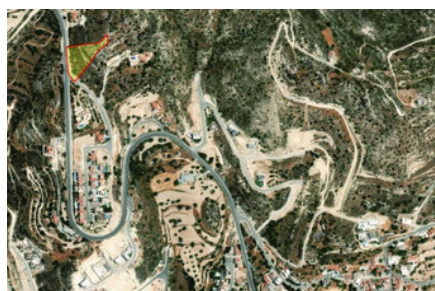


RESIDENTIAL PLOT IN
PALODIA - 2500M²

#2435

€275,000 + НДС
€370,000



Подкатегория: Residential



Площадь: 2501m²



Зона: H4



Коэффициент застройки: 4



Коэффициент покрытия:



Макс высота: 8.3m



Grigori Afxentiou 8A,
4005, Mesa Geitonia
Limassol

sales@quastilo.com
+357 95 727 000
quastilo.com



P R O P E R T Y F O R S A L E

RESIDENTIAL PLOT IN PALODIA - 2500M²

ОБЗОР

 Limassol, Palodeia  Building Plot  2435

ОПИСАНИЕ

This residential plot with beautiful views is located on an elevated area towards the main road of Palodia-Paramitha, Limassol, within close proximity to amenities and just a short drive away from all that the cosmopolitan city of Limassol has to offer. The plot size is net 2500m² and has 40% building factor, 25% covered factor and it falls within the Residential Planning Zone H4. The land has already obtain a Planning Permit and Building Permit for parcelization. You can build up to 1000m² internal areas plus verandas. There are draft designs and possibility to develop a 20 one-bedroom apartment building or four houses or two large villas. If you are looking for a plot development or plot for an investment, this opportunity is ideal. SPECIAL PRICE FOR THIS MONTH!!!!!!!!!!!!!!!!!!!!!!!!!!!!!!

ХАРАКТЕРИСТИКИ

РАССТОЯНИЯ

Amenities: 500 m

Airport: 50 km

Sea: 5 km

Public transport: 100 m

Schools: 500 m

Resort: 5 km



Grigori AFxentiou 8A,
4005, Mesa Geitonia
Limassol

sales@quastilo.com
+357 95 727 000
quastilo.com



P R O P E R T Y F O R S A L E