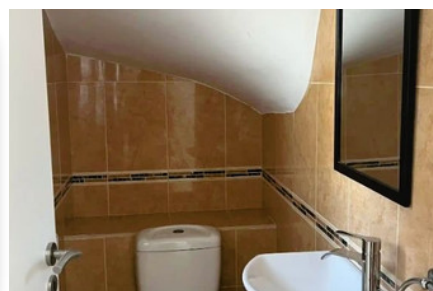
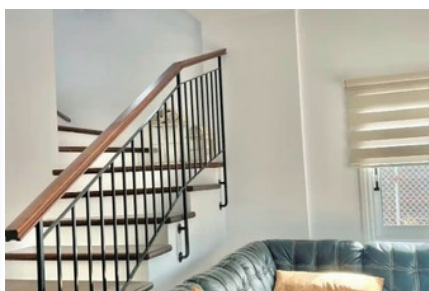
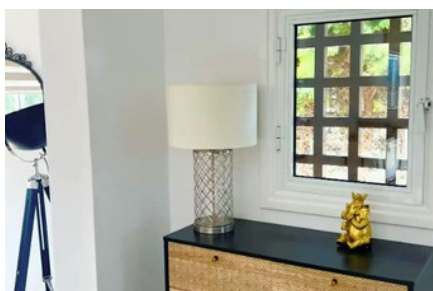
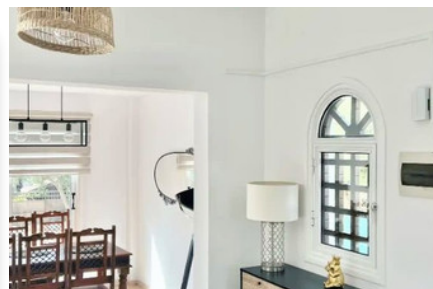
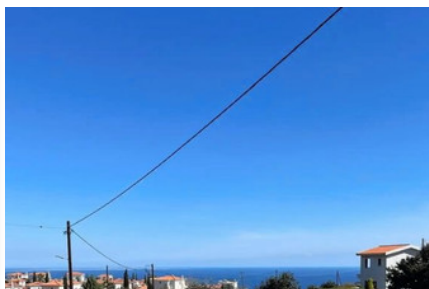


BEAUTIFUL DETACHED HOUSE IN PISSOURI - 2 BEDROOM

#2380

€285,000



 Спальни: 2

 Ванные комнаты: 2

 Общая площадь: 95m²

 Участок: 420m²

 Статус: Resale

 Парковка: Covered



Grigori Afxentiou 8A,
4005, Mesa Geitonia
Limassol

sales@quastilo.com
+357 95 727 000
quastilo.com



P R O P E R T Y F O R S A L E

BEAUTIFUL DETACHED HOUSE IN PISSOURI - 2 BEDROOM

ОБЗОР



Limassol, Pissouri



Detached House



2380

ОПИСАНИЕ

This beautiful detached house is located in Pissouri, Limassol. Pissouri is the third largest village district in the Limassol district of Cyprus, and is located just off the A6 motorway midway between Limassol and Paphos (34 kilometers from each). With its idyllic location, this property offers the perfect balance of tranquility and accessibility. The plot size is 420m² and the covered area 90m². It consists of 2 bedrooms, living area, kitchen, dining area, main bathroom and guest toilet. It is recently refurbished and Fully insulated. Externally there are covered and uncovered verandas, pergola, parking and garden. Also has amazing sea view. All amenities are close coffee shops, restaurants, supermarkets class The house is two Minutes from the sea. This property would make an ideal private permanent residence or an attractive holiday home investment with potential high rental returns. Title deeds!!!

УДОБСТВА

Aircondition, Split system

Parking, Covered

Pergola

Solar water heater

ХАРАКТЕРИСТИКИ

Fitted wardrobes

Garden

Guest WC

Veranda

Quiet area

Rental potential

Sea view

Kitchen appliances



Grigori Afxentiou 8A,
4005, Mesa Geitonia
Limassol

sales@quastilo.com
+357 95 727 000
quastilo.com



P R O P E R T Y F O R S A L E