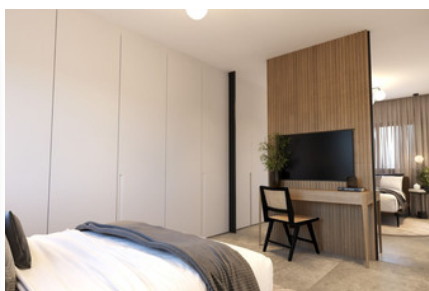


MODERN APARTMENT IN ERIMI - 2 BEDROOM

#2345

€235,000 + НДС



 Спальни: 2

 Ванные комнаты: 2

 Общая площадь: 85m²

 Крытая веранда: 15m²

 Статус: Under construction



Grigori Afxentiou 8A,
4005, Mesa Geitonia
Limassol

sales@quastilo.com
+357 95 727 000
quastilo.com



P R O P E R T Y F O R S A L E

MODERN APARTMENT IN ERIMI - 2 BEDROOM

ОБЗОР

 Limassol, Erimi  Apartment  2345

ОПИСАНИЕ

A stunning apartment that is currently under construction in the lovely area of Erimi, with easy access to the highway, just a short drive away from everyday amenities. This modern unit offers 85m2 of internal space, designed with comfort and style in mind. It features two bedrooms, en-suite in the master bedroom, main bathroom, open plan kitchen, living and dining area, covered veranda, covered parking and storage.

Erimi is known for its peaceful atmosphere, making it a perfect location for a relaxed lifestyle. With convenient access to the highway, commuting is easy, whether you are heading to nearby towns or enjoying the beautiful coastline. The area also boasts a variety of local amenities, including shops, cafes, and parks, ensuring that everything you need is just a stone's throw away.

For more information or to schedule a viewing, please contact Quastilo. We look forward to helping you find your ideal home in Erimi.

УДОБСТВА

Aircondition, Provision	Parking, Covered	Elevator
Storage	Solar water heater	

ХАРАКТЕРИСТИКИ

Thermal insulation	Easy access to highway	Fitted wardrobes
Pressurized water system	Double glazing	Veranda
Quiet area	Rental potential	En suite bathroom
Modern design	Near amenities	

РАССТОЯНИЯ

Amenities: 300 m	Airport: 50 km	Sea: 3 km
Public transport: 100 m	Schools: 500 m	Resort: 3 km



Grigori Afxentiou 8A,
4005, Mesa Geitonia
Limassol

sales@quastilo.com
+357 95 727 000
quastilo.com



P R O P E R T Y F O R S A L E