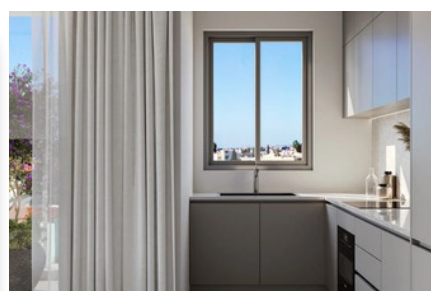
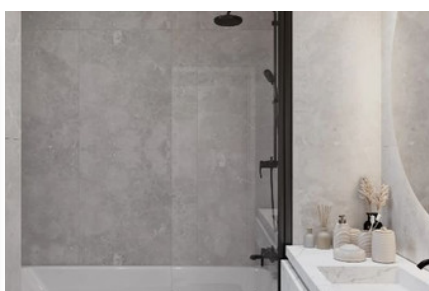
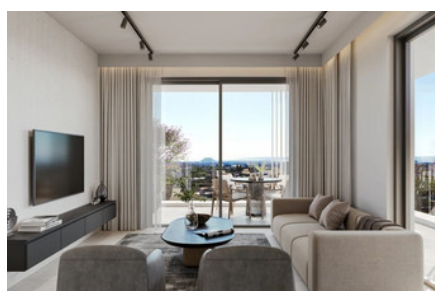
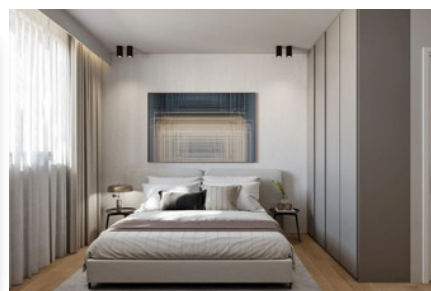


MODERN PENTHOUSE APARTMENT IN YPSONAS - 2 BEDROOM

#2229

€320,000 + НДС



Спальни: 2



Ванные комнаты: 2



Общая площадь: 77m²



Крытая веранда: 44m²



Статус: Under construction



Рейтинг энергоэффективности: A



Grigori Afxentiou 8A,
4005, Mesa Geitonia
Limassol

sales@quastilo.com
+357 95 727 000
quastilo.com



P R O P E R T Y F O R S A L E

MODERN PENTHOUSE APARTMENT IN YPSONAS - 2 BEDROOM

ОБЗОР

 Limassol, Ypsonas  Apartment  2229

ОПИСАНИЕ

This modern project is located in a newly built neighborhood at Ypsonas, a rapidly emerging and highly promising area in Limassol. Situated next to the local high street, it offers convenient access to the city center and a plethora of amenities just outside its doorstep. It consists of eight apartments, including five 1-bedroom and three 2-bedroom apartments, spread across three floors. Spacious internal and external areas, Class A Energy Efficiency, stylish design, high-quality materials, and finishes in a unique residential project. Excellent choice for residence or investment.

УДОБСТВА

Aircondition, Provision	Parking, Covered	Elevator
Storage	Solar water heater	

ХАРАКТЕРИСТИКИ

Thermal insulation	Fitted wardrobes	Pressurized water system
City view	Double glazing	Veranda
Quiet area	Rental potential	En suite shower
Modern design	Sea view	Near amenities

РАССТОЯНИЯ

Amenities: 100 m	Airport: 50 km	Sea: 2.5 km
Public transport: 100 m	Schools: 500 m	Resort: 2.5 km



Grigori Afxentiou 8A,
4005, Mesa Geitonia
Limassol

sales@quastilo.com
+357 95 727 000
quastilo.com



P R O P E R T Y F O R S A L E