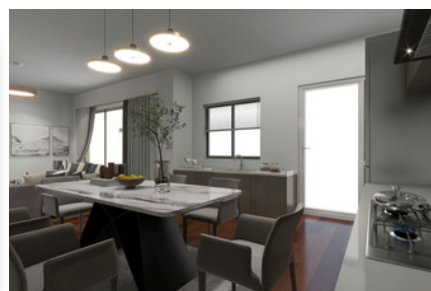
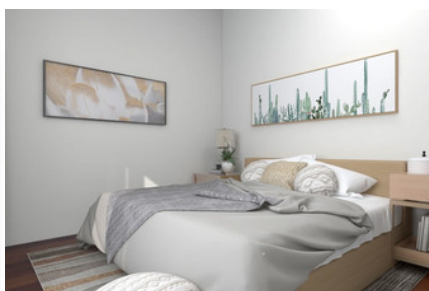


MODERN PENTHOUSE
APARTMENT IN KATO
POLEMIDIA - 3
BEDROOM

#2155

€357,000 + НДС



Спальни: 3



Ванные комнаты: 2



Общая площадь: 91m²



Крытая веранда: 21.5m²



Статус: Under construction



Рейтинг энергоэффективности...



Grigori Afxentiou 8A,
4005, Mesa Geitonia
Limassol

sales@quastilo.com
+357 95 727 000
quastilo.com



P R O P E R T Y F O R S A L E

MODERN PENTHOUSE APARTMENT IN KATO POLEMIDIA - 3 BEDROOM

ОБЗОР



Limassol, Kato Polemidia



Apartment



2155

ОПИСАНИЕ

A new project inspired by modern architecture with functional design, comprising: One three-level residential building with six modern independent apartments. Located in a quiet neighborhood, in Polemidia area, with easy access to highway and 3.5km from Casino City of Dreams, Golf, My Mall and close to all amenities. Each apartment boasts stunning attention to detail, modern concept, Italian kitchens, two parking, storage, high quality materials and finishes, energy efficiency and much more! Don't miss this opportunity to own this property, that can bring you, either an income with high rental returns or a permanent home.

УДОБСТВА

Aircondition, Provision

Parking, Covered

Elevator

Storage

Solar water heater

Solar photovoltaic panels

ХАРАКТЕРИСТИКИ

Thermal insulation

Easy access to highway

Fitted wardrobes

Pressurized water system

Open plan

Double glazing

Guest WC

Veranda

Quiet area

Rental potential

Modern design

Near amenities

Roof garden

РАССТОЯНИЯ

Amenities: 100 m

Airport: 50 km

Sea: 4 km

Public transport: 100 m

Schools: 500 m

Resort: 3.5 km



Grigori AFxentiou 8A,
4005, Mesa Geitonia
Limassol

sales@quastilo.com
+357 95 727 000
quastilo.com



P R O P E R T Y F O R S A L E