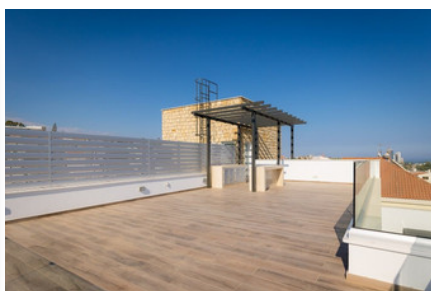
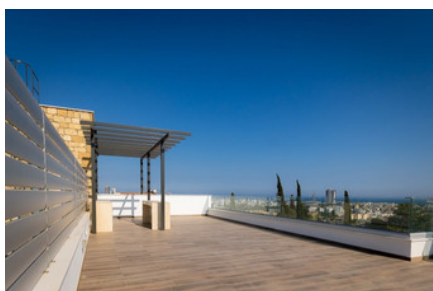
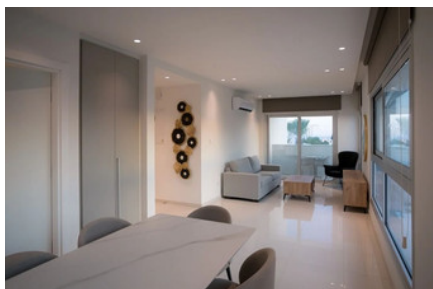


MODERN APARTMENT BUILDING IN GREEN AREA GERMASOGEIA - 4 UNITS

#2015

€2,500,000 + НДС



Спальни: 8



Ванные комнаты: 11



Общая площадь: 795m²



Участок: 519m²



Статус: Under construction



Парковка: Covered



Grigori Afxentiou 8A,
4005, Mesa Geitonia
Limassol

sales@quastilo.com
+357 95 727 000
quastilo.com



P R O P E R T Y F O R S A L E

MODERN APARTMENT BUILDING IN GREEN AREA GERMASOGEIA - 4 UNITS

ОБЗОР



Limassol, Germasogeia



Apartment Building



2015

ОПИСАНИЕ

This small block of four different 2-bedroom units in Limassol, has all the features that make it an ideal investment real estate. The property is located in a quiet residential area, in Germasogeia, one of the prime areas in Limassol, only 2km from the nearest organized sandy beach. All everyday amenities from banks and supermarkets to shops and restaurants are less than 1km from the property. In addition, easy access to the highway makes it an ideal base for commuters or regular travellers, as it is midway between the two airports in Larnaca and Pafos, both around 50km away. The 3-storey block is marked by its contemporary, simple lines and houses 2 duplexes across the ground and first floor, each with 2 ensuite bedrooms and an open-plan living area. The third unit is on the first floor, while the fourth unit is the penthouse on the second floor, with its vast uncovered veranda. As such, the property offers a variety of 2-bedroom configurations to suit different purposes and preferences. Every aspect of design, construction and finishing is geared towards comfort in an urban Mediterranean environment: Elegant entrance lobby, bright interiors, cool superior finishing materials, double glazed windows, ample fitted kitchen cabinets and appliances as well as bedroom wardrobes. Solar heating and split unit air-conditioning are also fully installed. For each unit there is a designated underground parking space, and the building provides an additional ground floor parking spot for the disabled. A communal roof terrace on the third floor offers residents a place to meet and enjoy the uninterrupted sea view, and a cool escape for evenings under the stars. Seen as a whole, this is an investment proposition with vast potential. Whether for own use for an extended family, or for short- or long-term rental revenue, will appeal to both the local and expatriate market. It is particularly recommended for buyers seeking eligibility for the residency by investment scheme.

УДОБСТВА

Aircondition, Provision

Heating, Provision

Parking, Covered

Elevator

Storage

Solar water heater

ХАРАКТЕРИСТИКИ

Thermal insulation

Easy access to main roads

Easy access to highway

Fitted wardrobes

Pressurized water system

Double glazing



Grigori AFxentiou 8A,
4005, Mesa Geitonia
Limassol

sales@quastilo.com
+357 95 727 000
quastilo.com



P R O P E R T Y F O R S A L E