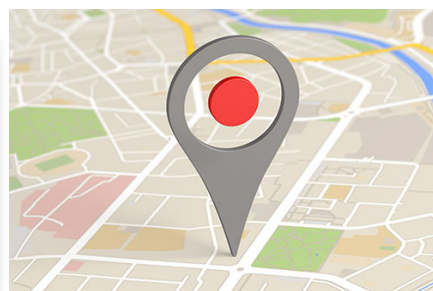
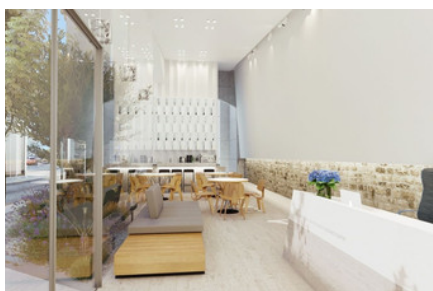


MODERN COMMERCIAL  
BUILDING IN  
HISTORICAL CENTER -  
1504M<sup>2</sup>

#2011

€9,200,000 +  
НДС



Общая площадь: 1504m<sup>2</sup>



Участок: 778m<sup>2</sup>



Статус: Under construction



Парковка: Covered



Кондиционер: Provision



Grigori Afxentiou 8A,  
4005, Mesa Geitonia  
Limassol

sales@quastilo.com  
+357 95 727 000  
quastilo.com



P R O P E R T Y F O R S A L E

# MODERN COMMERCIAL BUILDING IN HISTORICAL CENTER - 1504M<sup>2</sup>

## ОБЗОР



Limassol, City Center



Commercial Building



2011

## ОПИСАНИЕ

This ultra-modern five-level Building is located in the heart of Limassol in a short walk to Limassol's business and shopping district, the seafront and the new marina. Consisting of 6 spacious contemporary offices with outdoor verandas, green areas, common cafe-lounge area on the 5th floor and a gym on the 6th floor. Striking modern styling, excellent configuration, and top-class build quality makes the tower visually attractive, offering comfort and cosy atmosphere to work. A stylish, contemporary lobby housing two lifts for access to all floors. In the centre of the building is an internal garden with suspended bridge feature, and a communal relaxation lounge ideal for socialising. The entire building is secured by remote controlled gates and all the offices have provisions for video entryphone and alarm systems.

## УДОБСТВА

Aircondition, Provision

Parking, Covered

Elevator

## ХАРАКТЕРИСТИКИ

Energy efficient doors/windows

Thermal insulation

Easy access to main roads

Spacious rooms

Entrance gate

Reception

Kitchenette

Near public transport

Luxury specifications

Near bus route

Near amenities

## РАССТОЯНИЯ

**Amenities:** 50 m

**Airport:** 60 km

**Sea:** 100 m

**Public transport:** 50 m

**Schools:** 500 m

**Resort:** 100 m



Grigori Afxentiu 8A,  
4005, Mesa Geitonia  
Limassol

sales@quastilo.com  
+357 95 727 000  
quastilo.com



P R O P E R T Y F O R S A L E