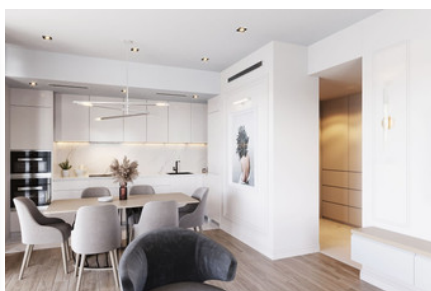
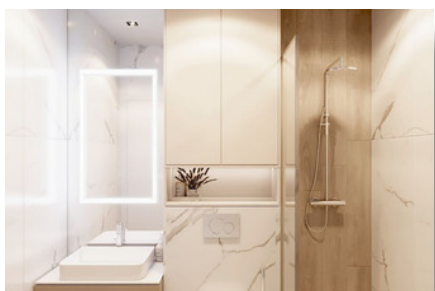


LUXURY PENTHOUSE IN COLUMBIA - 4 BEDROOM + STUDIO

#1972

€1,530,000 +
НДС €1,700,000



 Спальни: 4

 Ванные комнаты: 4

 Общая площадь: 193m²

 Крытая веранда: 35m²

 Статус: Key ready

 Открытая веранда: 210m²



Grigori Afxentiou 8A,
4005, Mesa Geitonia
Limassol

sales@quastilo.com
+357 95 727 000
quastilo.com



P R O P E R T Y F O R S A L E

LUXURY PENTHOUSE IN COLUMBIA - 4 BEDROOM + STUDIO

ОБЗОР

 Limassol, Columbia  Apartment  # 1972

ОПИСАНИЕ

This amazing project is located in the privileged Columbia area, in the heart of Limassol, and boasts close proximity to all kinds of amenities. Designed for people to work, live and relax, this exceptional location gives residents and their guests the complete Limassol experience in the centre of the city. Spacious internal and external areas, stylish design, high-quality finishes in a unique property ideal choice for modern urban living. Resident's enjoy access to private gym facilities for wellbeing and fitness, just some of the facilities the project has to offer. Available 2 exclusive 4 bedroom penthouses, with expansive terraces offering panoramic sea views and the Limassol cost line. These exquisite penthouses offer private roof terrace with private roof top swimming pool and addition studio room and entertainment area.

УДОБСТВА

Aircondition, Provision	Heating, Underfloor	Parking, Covered
Pool, Private	Elevator	Gym
Storage	Gated complex	Solar water heater

ХАРАКТЕРИСТИКИ

Thermal insulation	Easy access to main roads	Easy access to highway
Fitted wardrobes	Pressurized water system	Alarm system
Guest WC	CCTV	Rental potential
En suite shower	Luxury specifications	Modern design
Sea view	Near amenities	Roof garden

РАССТОЯНИЯ

Amenities: 100 m	Airport: 50 km	Sea: 500 m
Public transport: 100 m	Schools: 200 m	Resort: 500 m



Grigori Afxentiou 8A,
4005, Mesa Geitonia
Limassol

sales@quastilo.com
+357 95 727 000
quastilo.com



P R O P E R T Y F O R S A L E