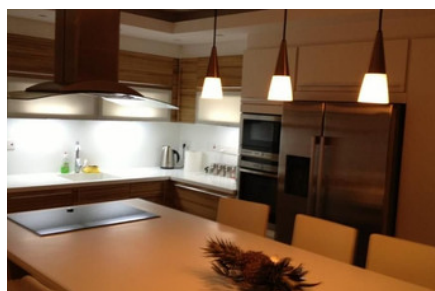


MODERN PENTHOUSE APARTMENT IN GERMASOGEIA - 2 BEDROOM

#1822

€400,000



 Спальни: 2

 Ванные комнаты: 2

 Общая площадь: 87m²

 Крытая веранда: 32m²

 Статус: Resale

 Сад на крыше: 73m²



Grigori Afxentiou 8A,
4005, Mesa Geitonia
Limassol

sales@quastilo.com
+357 95 727 000
quastilo.com



P R O P E R T Y F O R S A L E

MODERN PENTHOUSE APARTMENT IN GERMASOGEIA -2 BEDROOM

ОБЗОР



Limassol, Germasogeia



Apartment



1822

ОПИСАНИЕ

This modern penthouse is located in Germasogeia, Limassol, close to all amenities. It consists of 2 bedrooms, walking wardrobe and jacuzzi in the master bedroom, open plan kitchen, living area and main bathroom. Covered veranda and roof garden with beautiful views, covered parking, storage and common swimming pool. All electrical appliances (NEFF) - electrical shutters - electric blinds - roof concealed inverter type air conditions (DAKIN) - hydro massage & aero massage jacuzzi - rain shower (GROHE) - double glazed windows - all modern furniture in all areas - internet receiver - water cleaning and limescale remove system - solar panel for water heating - 2 tone water tank - roof false ceilings with spot lights & hidden lighting - video entry phone - electric central heating - barbeque on balcony - Title deeds. Don't miss this opportunity to own this lovely penthouse.

УДОБСТВА

Aircondition, Central system

Heating, Central

Parking, Covered

Pool, Communal

Elevator

Storage

Solar water heater

ХАРАКТЕРИСТИКИ

Fitted wardrobes

Shutters, electric

Double glazing

Roller blinds

Rental potential

Luxury specifications

Modern design

Near amenities

Jacuzzi

Barbeque

Roof garden

Kitchen appliances

РАССТОЯНИЯ

Amenities: 200 m

Airport: 60 km

Sea: 3 km

Public transport: 100 m

Schools: 500 m

Resort: 3 km



Grigori Afxentiou 8A,
4005, Mesa Geitonia
Limassol

sales@quastilo.com
+357 95 727 000
quastilo.com



P R O P E R T Y F O R S A L E