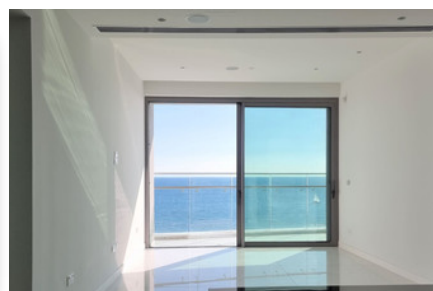
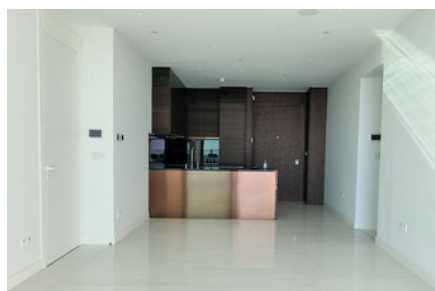


LUXURY SEAFRONT APARTMENT IN GERMASOGEIA -TOURIST AREA - 2 BEDROOM

#1679

€1,950,000



 Спальни: 2

 Ванные комнаты: 2

 Общая площадь: 80m²

 Крытая веранда: 20m²

 Статус: Key ready

 Рейтинг энергоэффективности: A



Grigori Afxentiou 8A,
4005, Mesa Geitonia
Limassol

sales@quastilo.com
+357 95 727 000
quastilo.com



P R O P E R T Y F O R S A L E

LUXURY SEAFRONT APARTMENT IN GERMASOGEIA -TOURIST AREA - 2 BEDROOM

ОБЗОР



Limassol, Germasogeia Tourist Area



Apartment



1679

ОПИСАНИЕ

A world-class seafront development, in ultra-desirable coastal Limassol in Cyprus, with breathtaking sea views from all apartments. This landmark development consists of luxury residences that will enjoy in-house services, concierge, exceptional facilities, and a unique high-end shopping and dining plaza. This exceptional development showcases both architectural originality and a cosmopolitan personality. Situated on the sea frontage, in a land of 34,000sqm. Each apartment features uninterrupted sea views from spacious verandas and full height glazing seamlessly merges the interior with the exterior, adding to the immense sense of space. Ideal property for a luxury lifestyle.

УДОБСТВА

Aircondition, Central system

Heating, Central

Parking, Covered

Pool, Communal

Indoor pool, Communal

Storage

Solar water heater

ХАРАКТЕРИСТИКИ

Thermal insulation

Easy access to highway

Fitted wardrobes

Entrance gate

Pressurized water system

Open plan

24-hour security

Double glazing

Guest WC

Veranda

Rental potential

En suite bathroom

En suite shower

Luxury specifications

Modern design

Sea view

Sea front

Near bus route

Near amenities

РАССТОЯНИЯ

Amenities: 100 m

Airport: 600 m

Sea: 50 m

Public transport: 50 m

Schools: 1 km

Resort: 200 m



Grigori Afxentiou 8A,
4005, Mesa Geitonia
Limassol

sales@quastilo.com
+357 95 727 000
quastilo.com



P R O P E R T Y F O R S A L E