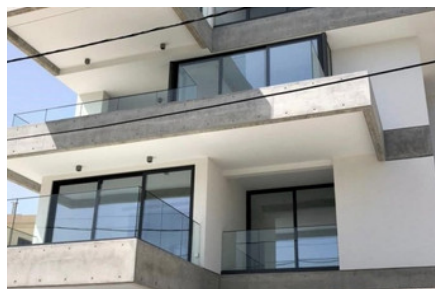


MODERN WHOLE FLOOR
PENTHOUSE APARTMENT
IN POTAMOS
GERMASOGEIAS - 2
BEDROOM

#1583

€840,000 + НДС



 Спальни: 2

 Ванные комнаты: 2

 Общая площадь: 101m²

 Крытая веранда: 30m²

 Статус: Key ready

 Сад на крыше: 80m²



Grigori Afxentiou 8A,
4005, Mesa Geitonia
Limassol

sales@quastilo.com
+357 95 727 000
quastilo.com



P R O P E R T Y F O R S A L E

MODERN WHOLE FLOOR PENTHOUSE APARTMENT IN POTAMOS GERMASOGEIAS - 2 BEDROOM

ОБЗОР



Limassol, Germasogeia Tourist Area



Apartment



1583

ОПИСАНИЕ

Located in Potamos Germasogeias (Papas area), Limassol, close to sandy beaches and all amenities. Innovative design and comfort are combined in this five-story building that boasts prized whole-floor apartments. This inspired concept presents each floor with its unique layout, provides utmost appeal and privacy, at the highest available level of specifications. The interiors connect seamlessly to the terrace spaces creating an indoor/outdoor livable setting. Each apartment offers an open floor plan that combines a state-of-the-art kitchen with the dining and living areas. The floor to ceiling sliding windows welcome ambient natural light, charming views and the Mediterranean Sea breeze. Two well-appointed bedrooms with designer bathrooms, built-in closets and walk-in closet complement the property. Each apartment is allocated two parking spaces and one storage room. Floors four and five are dedicated to the penthouse with its private roof garden and swimming pool. Great attention to detail and quality were afforded in selecting all the materials, amenities, and appliances for this building, such as security doors, smart automation systems for lights and curtains, elite landscaping and last but not least an exquisitely designed entrance to this stylish building.

УДОБСТВА

Aircondition, Central system

Heating, Central

Parking, Covered

Elevator

Storage

Solar water heater

ХАРАКТЕРИСТИКИ

Smart home automation

Thermal insulation

Easy access to highway

High ceilings

Fitted wardrobes

Pressurized water system

City view

Double glazing

Guest WC

Veranda

Rental potential

En suite shower

Modern design

Sea view

Near amenities

Roof garden



Grigori AFxentiou 8A,
4005, Mesa Geitonia
Limassol

sales@quastilo.com
+357 95 727 000
quastilo.com



P R O P E R T Y F O R S A L E