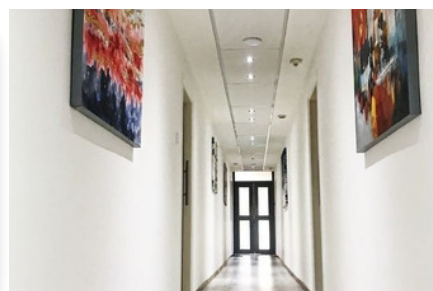
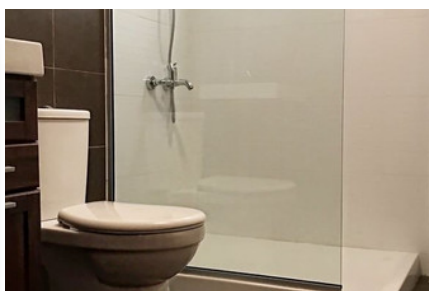
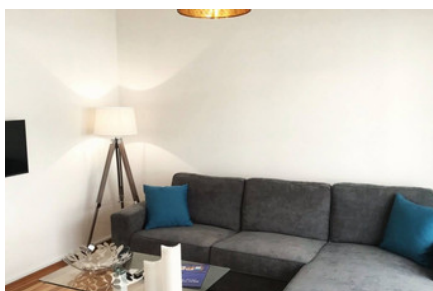
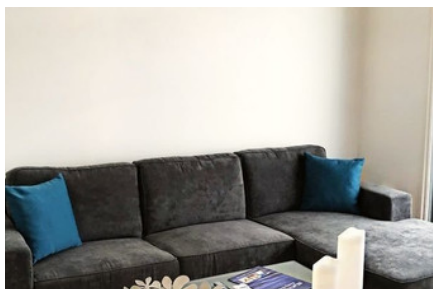


BEACHFRONT
APARTMENT IN
GERMASOGEIA, TOURIST
AREA - 1 BEDROOM

#1541

€1,250 /МЕСЯЦ
+ НДС



Спальни: 1



Ванные комнаты: 1



Общая площадь: 50m²



Статус: Key ready



Рейтинг энергоэффективности...



Grigori Afxentiou 8A,
4005, Mesa Geitonia
Limassol

sales@quastilo.com
+357 95 727 000
quastilo.com



P R O P E R T Y F O R R E N T

BEACHFRONT APARTMENT IN GERMASOGEIA, TOURIST AREA - 1 BEDROOM

ОБЗОР



Limassol, Germasogeia Tourist Area



Apartment



1541

ОПИСАНИЕ

Luxury 1 bedroom apartment in Germasogeia- Tourist area, Limassol. Situated in a renovated beachfront building, with uninterrupted side sea views. This luxury apartment benefits from a cleverly designed open plan sitting area and kitchen, veranda and a main bathroom. Brand new furniture, TV & stainless-steel electrical appliances included. Also offers: Fitness centre (gym), Complimentary wi-fi (ultrafast 1Gb/s fiber optic connection), Complimentary satellite TV (with over 500 channels), Video entry phone system, High level of security (Key-fob entry system), Gated property & private parking upon availability, CCTV in communal areas. Perfect choice for residence just a few steps away from the sandy beach and glistening waters.

УДОБСТВА

Aircondition, Central system

Elevator

Gated complex

Solar water heater

Clubhouse

ХАРАКТЕРИСТИКИ

Easy access to main roads

Easy access to highway

Balcony

Fitted wardrobes

Entrance gate, automated

Entrance gate

Shutters

Pressurized water system

Double glazing

Luxury specifications

Modern design

Sea front

Walking distance to beach

Near bus route

Near amenities

Internet

Kitchen appliances

РАССТОЯНИЯ

Amenities: 100 m

Airport: 60 km

Sea: 20 m

Public transport: 10 m

Schools: 1 km

Resort: 200 m



Grigori Afxentiou 8A,
4005, Mesa Geitonia
Limassol

sales@quastilo.com
+357 95 727 000
quastilo.com



P R O P E R T Y F O R R E N T