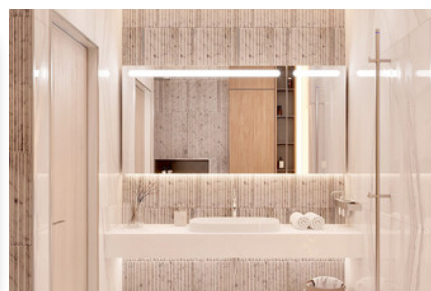
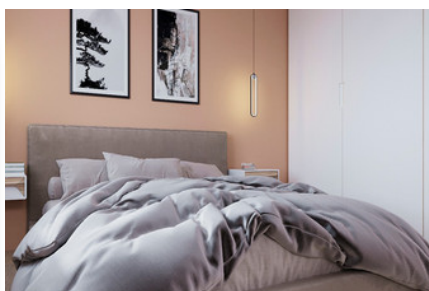
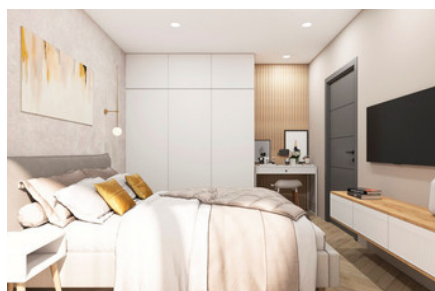


# LUXURY APARTMENT IN KATHOLIKI - 3 BEDROOM

## #2692

### €655,000 + VAT



 Bedrooms: 3

 Bathrooms: 3

 Covered: 129m<sup>2</sup>

 Covered veranda: 40.9m<sup>2</sup>

 Status: Under construction

 Energy efficiency rating: A



Grigori Afxentiou 8A,  
4005, Mesa Geitonia  
Limassol

[sales@quastilo.com](mailto:sales@quastilo.com)  
+357 95 727 000  
[quastilo.com](http://quastilo.com)



P R O P E R T Y F O R S A L E

# LUXURY APARTMENT IN KATHOLIKI - 3 BEDROOM

## OVERVIEW

 Limassol, Katholiki  Apartment  2692

## DESCRIPTION

A remarkable 4-story apartment building situated in the vibrant heart of Limassol, in the Katholiki area. Imagine living just a stone's throw away from the bustling Limassol Marina, surrounded by a wealth of attractions like the historic Limassol Castle, and the charming bars and restaurants of the old town. It's a place where culture and convenience meet. For your daily needs, everything is within reach, from local stores to a sports center and other essential amenities, ensuring a comfortable and convenient lifestyle.

This project encompasses 12 units, offering a variety of 1, 2 and 3-bedroom apartments and luxurious 2-bedroom penthouses. For those who dream bigger, there's the option to merge apartments, creating an exceptionally spacious and tailor-made penthouse. At this project, every home is a blend of elegance and comfort, meticulously designed to the highest standards. The living spaces feature open-plan designs with top-of-the-line Italian kitchens, perfect for culinary adventures and relaxed dining. The living areas are warm and welcoming, designed to be your personal haven of comfort. Quality materials, modern design and finishes, energy efficiency A, high ceilings, photovoltaics, as well as location are only some of the many advantages of this modern project.

Contact Quastilo today to arrange a viewing and discover all the possibilities this property has to offer.

## FACILITIES

Aircondition, Split system	Heating, Provision	Parking, Covered
Elevator	Storage	Solar water heater
Solar photovoltaic panels		

## FEATURES

Thermal insulation	Easy access to main roads	Double glazing
Guest WC	Rental potential	En suite shower
Luxury specifications	Modern design	Near amenities

## DISTANCES



Grigori AFxentiou 8A,  
4005, Mesa Geitonia  
Limassol

sales@quastilo.com  
+357 95 727 000  
quastilo.com



P R O P E R T Y F O R S A L E