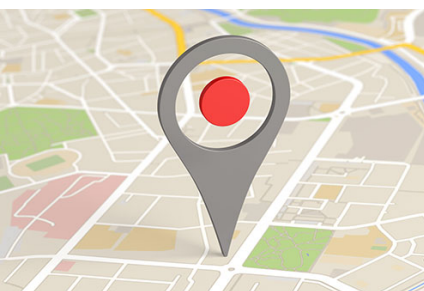
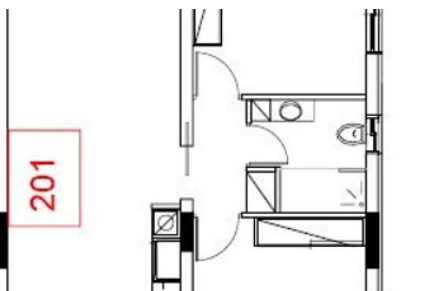


MODERN APARTMENT IN PANTHEA - 2 BEDROOM


#2644

€290,000 + VAT



 Bedrooms: 2

 Covered: 92m²

 Status: Under construction



Grigori Afxentiou 8A,
4005, Mesa Geitonia
Limassol

sales@quastilo.com
+357 95 727 000
quastilo.com



P R O P E R T Y F O R S A L E

MODERN APARTMENT IN PANTHEA - 2 BEDROOM

OVERVIEW

 Limassol, Panthea  Apartment  2644

DESCRIPTION

Last available two-bedroom apartment under construction in the desirable area of Panthea/ Agia Fyla, Limassol. This property offers a comfortable covered area of 92 m², featuring a spacious open-plan layout with high-quality finishes. The apartment includes two well-sized bedrooms, a stylish bathroom, and a contemporary kitchen designed for everyday living. The location offers quick access to the city center and surrounding areas. The neighborhood is family-friendly, with a variety of schools, supermarkets, cafes, and parks all within a short drive, making daily life easy and enjoyable.

This project is advertised by Quastilo. Contact us for more details and to arrange a viewing! If you are seeking a new home in a growing and well-connected area, this apartment provides an excellent opportunity for comfortable and modern living.

FACILITIES

Aircondition, Split system	Parking, Covered	Elevator
Storage	Solar water heater	

FEATURES

Thermal insulation	Easy access to highway	Fitted wardrobes
Double glazing	Veranda	Quiet area
Rental potential	Modern design	Near amenities



Grigori AFxentiou 8A,
4005, Mesa Geitonia
Limassol

sales@quastilo.com
+357 95 727 000
quastilo.com



P R O P E R T Y F O R S A L E