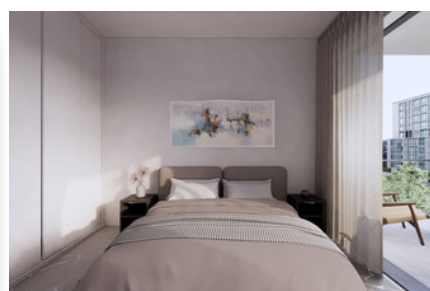
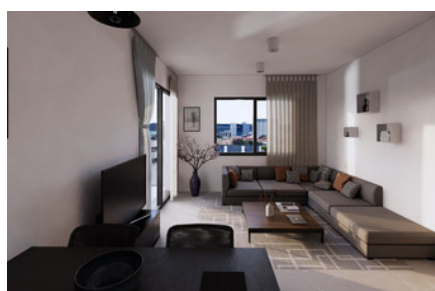


MODERN APARTMENT IN OMONIA - 2 BEDROOM

#2628

€300,000 + VAT



 **Bedrooms:** 2

 **Bathrooms:** 2

 **Covered:** 81m²

 **Covered veranda:** 19.55m²

 **Status:** Under construction



Grigori Afxentiou 8A,
4005, Mesa Geitonia
Limassol

sales@quastilo.com
+357 95 727 000
quastilo.com



P R O P E R T Y F O R S A L E

MODERN APARTMENT IN OMONIA - 2 BEDROOM

OVERVIEW

 Limassol, Omonoia  Apartment  2628

DESCRIPTION

This modern project featuring 15 spacious apartments with luxurious finishes and exquisite design. It consists of 6 one-bedroom and 9 two-bedroom apartments all built with the highest quality materials. Located in Omonoia, this apartment enjoys a central position with easy access to everything. Additionally, residents will appreciate the proximity to the highway, ensuring effortless travel to surrounding locations. Whether you are looking to invest or seeking a new home, this apartment offers a blend of comfort and practicality in a sought-after location. Don't miss the chance to make this fantastic apartment your own. For more information, please contact Quastilo today and discover all that this exceptional property has to offer.

-Solar/Photovoltaic Power Systems

-Thermal insulation system to all facades of the building using 8cm thick external wall

-Aluminium frames with thermal breaks and energy efficient glass

-Smart Lighting

FACILITIES

Aircondition, Split system

Parking, Covered

Elevator

Storage

Solar water heater

FEATURES

Energy efficient doors/windows

Thermal insulation

Easy access to main roads

Easy access to highway

Fitted wardrobes

Pressurized water system

Double glazing

Veranda

Rental potential

En suite shower

Luxury specifications

Modern design

Near amenities

DISTANCES

Amenities: 100 m

Airport: 50 km

Sea: 1.2 km

Public transport: 100 m

Schools: 500 m

Resort: 1.2 km



Grigori Afxentiou 8A,
4005, Mesa Geitonia
Limassol

sales@quastilo.com
+357 95 727 000
quastilo.com



P R O P E R T Y F O R S A L E