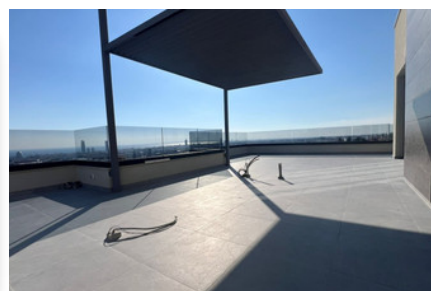
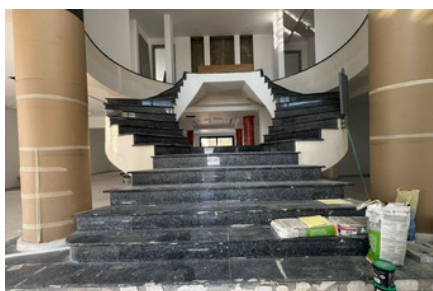
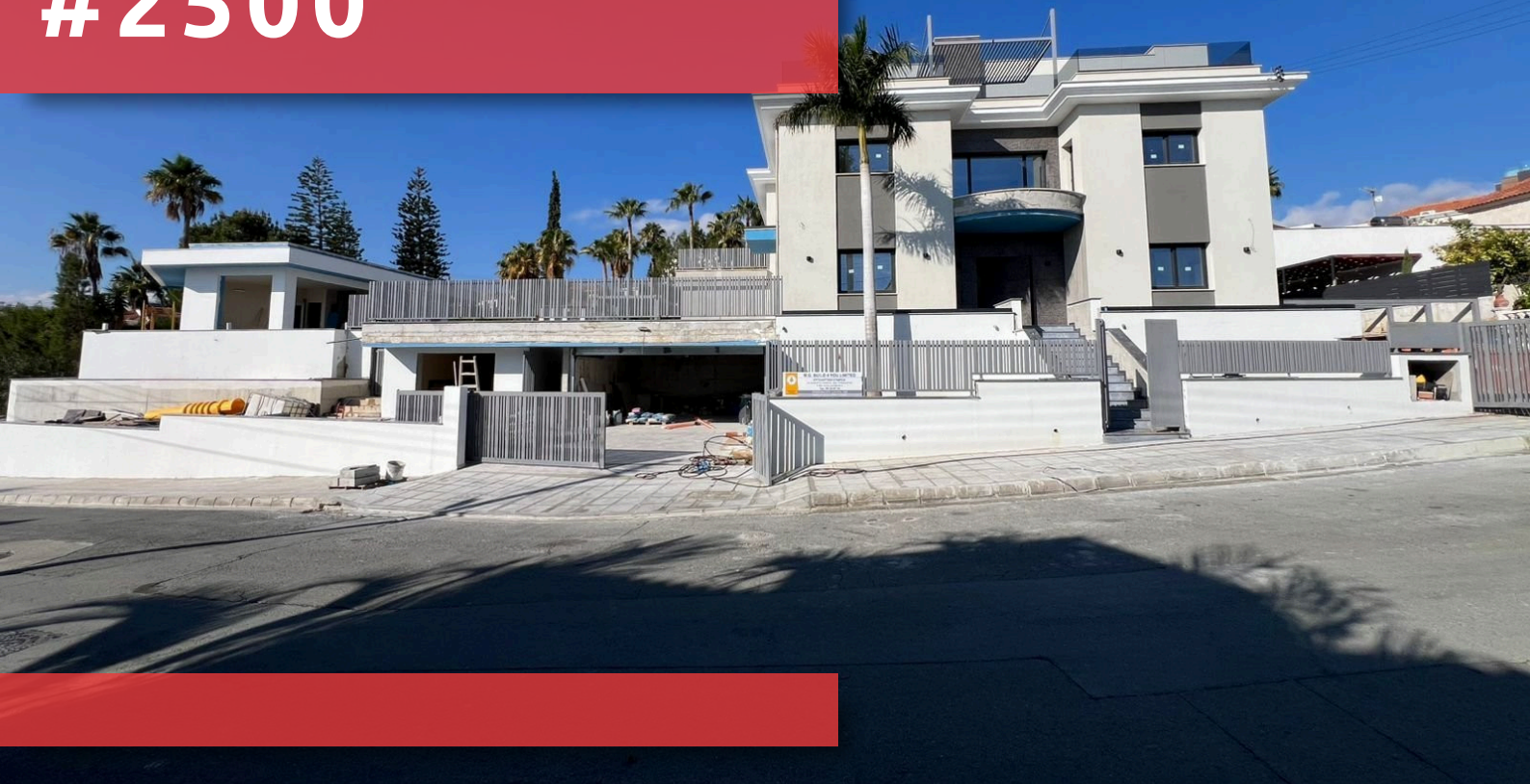


#2500



 Plot: 1813m²



Grigori Afxentiou 8A,
4005, Mesa Geitonia
Limassol

sales@quastilo.com
+357 95 727 000
quastilo.com



P R O P E R T Y F O R S A L E

OVERVIEW



Limassol, Agios Athanasios



Villa



2500

DESCRIPTION

- Plot area : 1813.00 m²
- Basement level 68.00m² : Home cinema, guest wc, staircase to ground floor, lift access to upper floors ,ramp to external covered and secured double parking
- Road level 84.00m²: Maids room complete with kitchenette, wc and living area, double covered and secured parking, staircase to ground floor and pool.
- Ground floor 332.00m² : 2 sitting areas, 2 living areas, dinning area, kitchen with island bar and kitchen sitting area, all in an open plan space and detailed arrangement. Laundry room, guest wc, exterior gym area with wc and shower. Underfloor heating and central cooling system
- 1st floor 256.00m² : double rounded central staircase, 4 big bedrooms equipped with ensuite in each, common balcony for the two bedrooms and one big balcony for master bedroom with view to the pool and town.
(balconies total area 60.00m²). Mini kitchenette, Lift access to all floors and additional staircase leading to upper floor. Underfloor heating and central cooling system
- 2nd floor 148.00m² : 2 big bedrooms equipped with ensuite in each, laundry area, and one big open space area with living equipped with integrated fireplace, dining, guest wc and kitchen with island bar. External sitting area with jacuzzi under pergola, barbeque bench, shower and walk around balcony of 134.00m² with 360° panoramic view at the city of Limassol and backyard gardens and pool. Underfloor heating and central cooling system
- General Exterior : Big modern overflow swimming pool with integrated jacuzzi jet, gardens with build in flower pots, mechanical rooms
- Detached apartment 80.00m² fully equipped with kitchen, living and dining area, guest wc, one bedroom with ensuite, hammam and sauna rooms. Direct access to the swimming pool and gardens. Panoramic view to the city of Limassol.
- Exterior bar under pergola, barbeque bench and backyard gardens with palm trees and other types of green features all located around a modern paved sitting area of approx. 130.00m² with garden pathways and both neoclassical and modern decorative elements.

FACILITIES

FEATURES



Grigori Afxentiou 8A,
4005, Mesa Geitonia
Limassol

sales@quastilo.com
+357 95 727 000
quastilo.com



P R O P E R T Y F O R S A L E