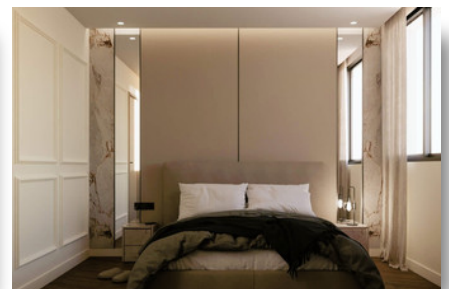
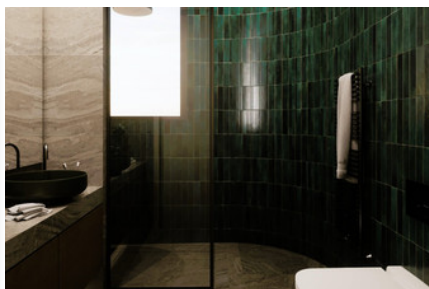
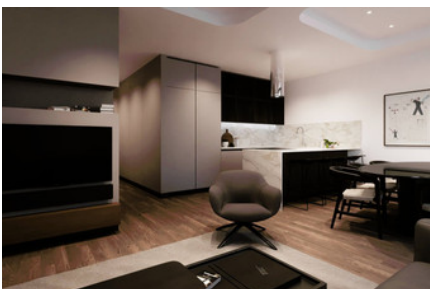


# MODERN APARTMENT IN PANTHEA - 2 BEDROOM

## #2416

### €285,000 + VAT



 **Bedrooms: 2**

 **Bathrooms: 2**

 **Covered: 84.4m<sup>2</sup>**

 **Covered veranda: 19.5m<sup>2</sup>**

 **Status: Under construction**

 **Energy efficiency rating: A**



Grigori Afxentiou 8A,  
4005, Mesa Geitonia  
Limassol

sales@quastilo.com  
+357 95 727 000  
quastilo.com



P R O P E R T Y F O R S A L E

# MODERN APARTMENT IN PANTHEA - 2 BEDROOM

## OVERVIEW

 Limassol, Panthea  Apartment # 2416

## DESCRIPTION

A brand new project that comprises of 5 supreme apartments at a one of the most demanded location of Limassol, at Panthea area, with easy access to highway, close to all amenities and an only short drive to Limassol city center. Quality materials, modern finishes, energy efficiency and much more are the main assets of this project. Ideal choice for residence or investment.

## FACILITIES

Aircondition, Provision	Heating, Provision	Parking, Covered
Elevator	Storage	Solar water heater
Solar photovoltaic panels		

## FEATURES

Thermal insulation	Easy access to highway	Fitted wardrobes
Entrance gate, automated	Open plan	Alarm system, Provision
Double glazing	Guest WC	Veranda
Modern design	Near amenities	

## DISTANCES

<b>Amenities:</b> 100 m	<b>Airport:</b> 50 km	<b>Sea:</b> 3 km
<b>Public Transport:</b> 100 m	<b>Schools:</b> 500 m	<b>Resort:</b> 3 km



Grigori Afxentiou 8A,  
4005, Mesa Geitonia  
Limassol

sales@quastilo.com  
+357 95 727 000  
quastilo.com



P R O P E R T Y F O R S A L E