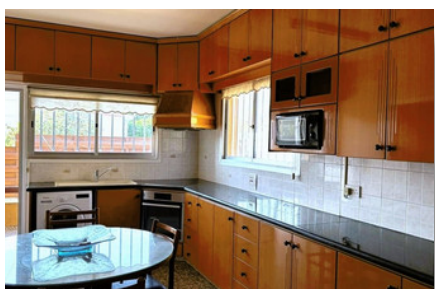


DETACHED HOUSE IN LINOPETRA - 3 BEDROOM

#2398

€2,300 /MONTH



 Bedrooms: 3

 Bathrooms: 3

 Covered: 200m²

 Plot: 550m²

 Status: Used

 Parking: Covered



Grigori Afxentiou 8A,
4005, Mesa Geitonia
Limassol

sales@quastilo.com
+357 95 727 000
quastilo.com



P R O P E R T Y F O R R E N T

DETACHED HOUSE IN LINOPETRA - 3 BEDROOM

OVERVIEW

 Limassol, Linopetra

 Detached House

 2398

DESCRIPTION

Located in the middle of everything this house is now available for rent. The plot size is 550m² and the covered area is 200m². It consists of 3 bedrooms, 3 bathrooms, kitchen, dining and living room. Can be rented as residential property or commercial property!

FACILITIES

Aircondition, Split system

Parking, Covered

Solar water heater

FEATURES

Easy access to main roads

Fitted wardrobes

Garden

Guest WC

Veranda

Near amenities

DISTANCES

Amenities: 100 m

Airport: 50 km

Sea: 1 km

Public transport: 100 m

Schools: 500 m

Resort: 500 m



Grigori Afxentiou 8A,
4005, Mesa Geitonia
Limassol

sales@quastilo.com
+357 95 727 000
quastilo.com



P R O P E R T Y F O R R E N T