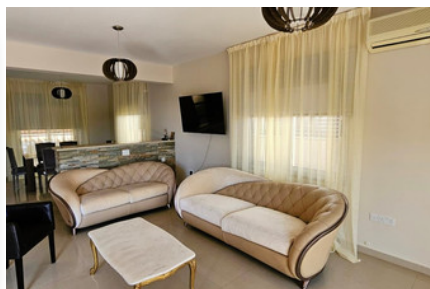
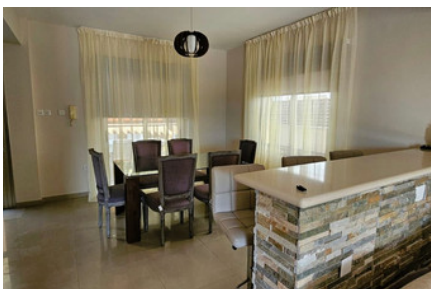
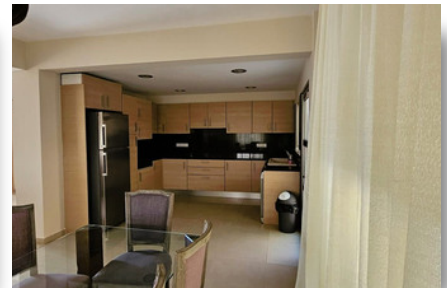


# BEAUTIFUL HOUSE IN PANTHEA - 3 BEDROOM

## #2391

## €3,000 /MONTH




 Bedrooms: 3

 Bathrooms: 3

 Covered: 180m<sup>2</sup>

 Plot: 150m<sup>2</sup>

 Status: Key ready

 Aircondition: Split system



Grigori Afxentiou 8A,  
4005, Mesa Geitonia  
Limassol

sales@quastilo.com  
+357 95 727 000  
quastilo.com



P R O P E R T Y F O R R E N T

# BEAUTIFUL HOUSE IN PANTHEA - 3 BEDROOM

## OVERVIEW

 Limassol, Panthea  Semi-Detached House  # 2391

## DESCRIPTION

Located in on of the most prestigious area of Panthea, Limassol, close to all amenities and we easy access to highway. The house consists of 3 bedrooms, en suite shower in the master bedroom, main bathroom, guest toilet, kitchen, living and dining area. The house renovated, no one has lived in it yet, is fully furnished with electrical al appliances all new. Externally there are covered and uncovered verandas and parking. The property would make an ideal family home for all year round.

## FACILITIES

Aircondition, Split system      Solar water heater

## FEATURES

Easy access to highway	Fitted wardrobes	Double glazing
Guest WC	Veranda	En suite Shower
Near amenities	Kitchen appliances	

## DISTANCES

<b>Amenities:</b> 100 m	<b>Airport:</b> 50 km	<b>Sea:</b> 3.5 km
<b>Public Transport:</b> 100 m	<b>Schools:</b> 300 m	<b>Resort:</b> 3 km



Grigori Afxentiou 8A,  
4005, Mesa Geitonia  
Limassol

sales@quastilo.com  
+357 95 727 000  
quastilo.com



P R O P E R T Y   F O R   R E N T