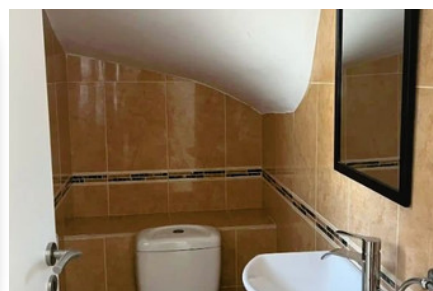
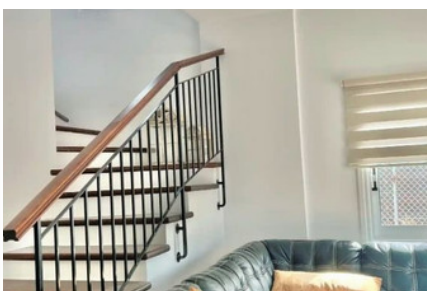
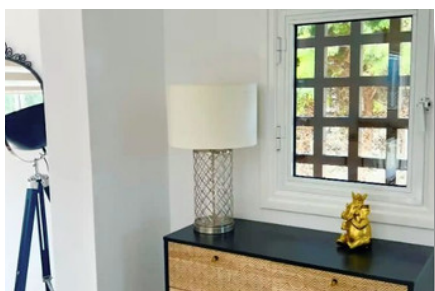
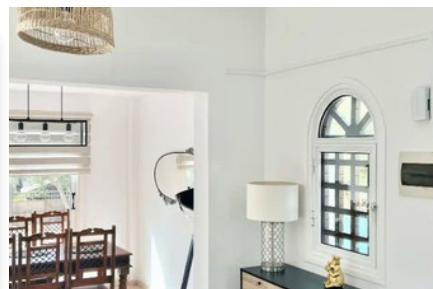
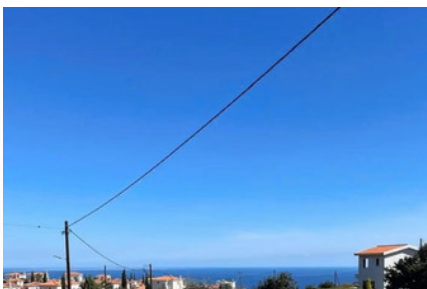


BEAUTIFUL DETACHED HOUSE IN PISSOURI - 2 BEDROOM

#2380

€250,000



 Bedrooms: 2

 Bathrooms: 2

 Covered: 95m²

 Plot: 420m²

 Status: Resale

 Parking: Covered



Grigori Afxentiou 8A,
4005, Mesa Geitonia
Limassol

sales@quastilo.com
+357 95 727 000
quastilo.com



P R O P E R T Y F O R S A L E

BEAUTIFUL DETACHED HOUSE IN PISSOURI - 2 BEDROOM

OVERVIEW

 Limassol, Pissouri  Detached House  2380

DESCRIPTION

This beautiful detached house is located in Pissouri, Limassol. Pissouri is the third largest village district in the Limassol district of Cyprus, and is located just off the A6 motorway midway between Limassol and Paphos (34 kilometers from each). With its idyllic location, this property offers the perfect balance of tranquility and accessibility. The plot size is 420m² and the covered area 90m². It consists of 2 bedrooms, living area, kitchen, dining area, main bathroom and guest toilet. It is recently refurbished and Fully insulated. Externally there are covered and uncovered verandas, pergola, parking and garden. Also has amazing sea view. All amenities are close coffee shops, restaurants, supermarkets class The house is two Minutes from the sea. This property would make an ideal private permanent residence or an attractive holiday home investment with potential high rental returns. Title deeds!!!

FACILITIES

Aircondition, Split system Parking, Covered Pergola
Solar water heater

FEATURES

Fitted wardrobes Garden Guest WC
Veranda Quiet area Rental potential
Sea view Kitchen appliances



Grigori Afxentiou 8A,
4005, Mesa Geitonia
Limassol

sales@quastilo.com
+357 95 727 000
quastilo.com



P R O P E R T Y F O R S A L E