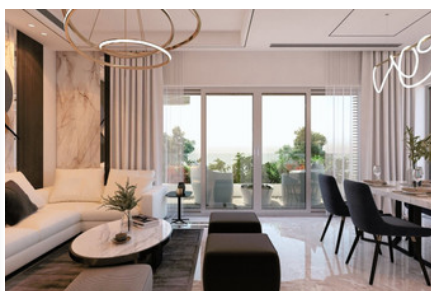
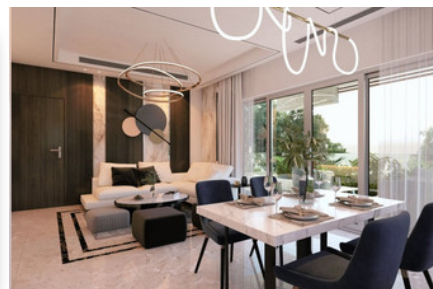
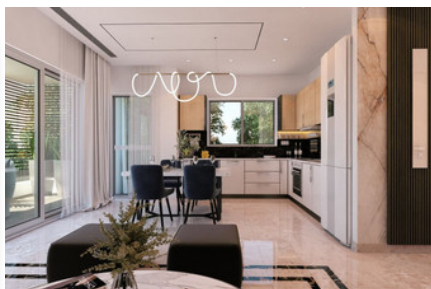


# MODERN APARTMENT IN YPSONAS - 2 BEDROOM

## #2338

€260,000 + VAT

€275,000



 Bedrooms: 2

 Bathrooms: 2

 Covered: 78m<sup>2</sup>

 Covered veranda: 22m<sup>2</sup>

 Status: Under construction

 Energy efficiency rating: A



Grigori Afxentiou 8A,  
4005, Mesa Geitonia  
Limassol

sales@quastilo.com  
+357 95 727 000  
quastilo.com



P R O P E R T Y F O R S A L E

# MODERN APARTMENT IN YPSONAS - 2 BEDROOM

## OVERVIEW

 Limassol, Ypsonas  Apartment  2338

## DESCRIPTION

This modern project, located in Ypsonas, consists of six 2 bedroom apartments all with wonderful views of the sea. The apartments are spacious, with open plan kitchen, including 1 guest toilet, 1 bathroom, covered verandas, storage and 1 covered parking. The breathtaking view of the sea, the well designed spaces and it's convenient location are ideal. The top floor apartments enjoy individual access to their private roof terrace. Excellent choice for residence or investment!

## FACILITIES

Aircondition, Split system	Heating, Provision	Parking, Covered
Elevator	Storage	Solar water heater

## FEATURES

Thermal insulation	Open plan	Double glazing
Guest WC	Veranda	Rental Potential
Modern design	Near amenities	

## DISTANCES

<b>Amenities:</b> 200 m	<b>Airport:</b> 50 km	<b>Sea:</b> 4.5 km
<b>Public Transport:</b> 100 m	<b>Schools:</b> 500 m	<b>Resort:</b> 4.5 km



Grigori Afxentiou 8A,  
4005, Mesa Geitonia  
Limassol

sales@quastilo.com  
+357 95 727 000  
quastilo.com



P R O P E R T Y F O R S A L E