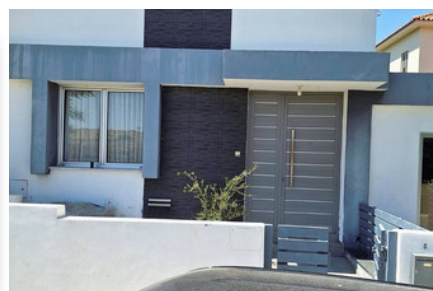
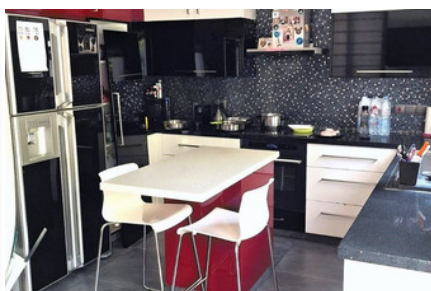
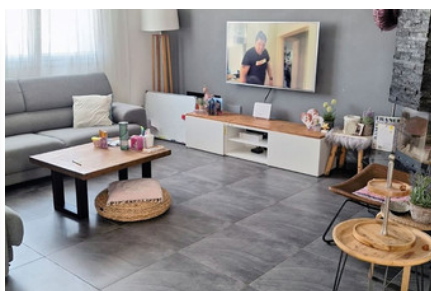
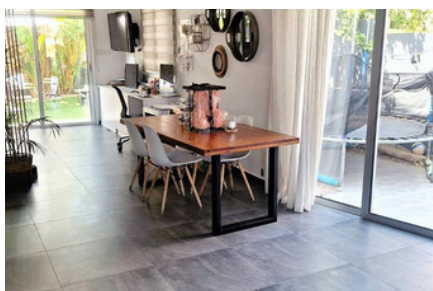


# MODERN HOUSE IN DALI/KALLITHEA - 3 BEDROOMS

## #2314

€230,000

€250,000



 Bedrooms: 3

 Bathrooms: 3

 Covered: 154m<sup>2</sup>

 Plot: 194m<sup>2</sup>

 Status: Resale

 Aircondition: Split system



Grigori Afxentiou 8A,  
4005, Mesa Geitonia  
Limassol

sales@quastilo.com  
+357 95 727 000  
quastilo.com



P R O P E R T Y F O R S A L E

# MODERN HOUSE IN DALI/KALLITHEA - 3 BEDROOMS

## OVERVIEW

 Nicosia, Dali  Semi-Detached House  # 2314

## DESCRIPTION

This modern semi detached house is located in a peaceful area of Kallithea/Dali, Nicosia, close to Carlsberg brewery, located into a newly built neighborhood, close to all amenities and services and with easy access to highway. The plot size is 194m<sup>2</sup> and the covered area 154m<sup>2</sup>. It consists of 2 floors. On the ground floor a welcoming entrance with open plan space of the kitchen and dining area, a spacious living room and a guest toilet. On the first floor there are 3 bedrooms, en-suite in the master bedroom and walking wardrobe and main bathroom. Externally the property benefits from a beautiful garden, covered and uncovered verandas and parking. Excellent choice for residence on investment! Don't miss the opportunity to own this beautiful home!

## FACILITIES

Aircondition, Split system      Storage      Solar water heater

## FEATURES

Fitted wardrobes	Pressurized water system	Walk-in closet
Double glazing	Guest WC	Veranda
Quiet area	Rental potential	En suite shower
Modern design	Near amenities	Indoor fireplace
Kitchen appliances		



Grigori Afxentiou 8A,  
4005, Mesa Geitonia  
Limassol

sales@quastilo.com  
+357 95 727 000  
quastilo.com



P R O P E R T Y   F O R   S A L E