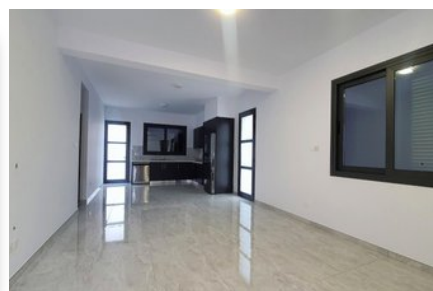
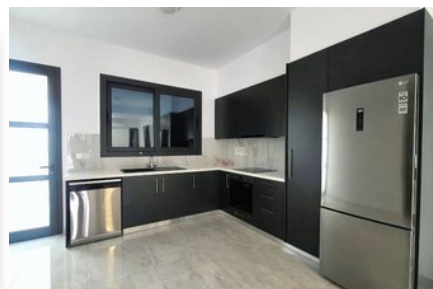


# BUNGALOW IN SOUNI - 2 BEDROOM

## #2291

### €290,000 + VAT




 **Bedrooms:** 2

 **Bathrooms:** 2

 **Covered:** 92m<sup>2</sup>

 **Plot:** 460m<sup>2</sup>

 **Status:** Key ready

 **Parking:** Covered



Grigori Afxentiou 8A,  
4005, Mesa Geitonia  
Limassol

[sales@quastilo.com](mailto:sales@quastilo.com)  
+357 95 727 000  
[quastilo.com](http://quastilo.com)



P R O P E R T Y F O R S A L E

# BUNGALOW IN SOUNI - 2 BEDROOM

## OVERVIEW

 Limassol, Souni  Bungalow  2291

## DESCRIPTION

This charming detached bungalow offers the perfect blend of comfort and tranquility. With its spacious layout and serene surroundings, it provides an ideal retreat for those seeking a peaceful lifestyle. The property boasts a large plot, ensuring ample outdoor space for gardening and relaxation. Inside, you'll find two generously sized bedrooms, a modern kitchen equipped with brand new appliances, and a cozy living area perfect for entertaining guests or simply unwinding after a long day. With its convenient location in Souni, Limassol, you'll enjoy easy access to local amenities while still being able to enjoy the beauty of nature right at your doorstep.

## FACILITIES

Aircondition, Split system

Parking, Covered

Solar water heater

## FEATURES

Thermal insulation

Fitted wardrobes

Shutters, electric

Garden, large

Double glazing

Veranda

Quiet Area

Rental Potential

En suite Shower

## DISTANCES

**Amenities:** 500 m

**Airport:** 40 km

**Sea:** 9 km

**Public Transport:** 100 m



Grigori AFxentiou 8A,  
4005, Mesa Geitonia  
Limassol

sales@quastilo.com  
+357 95 727 000  
quastilo.com



P R O P E R T Y F O R S A L E