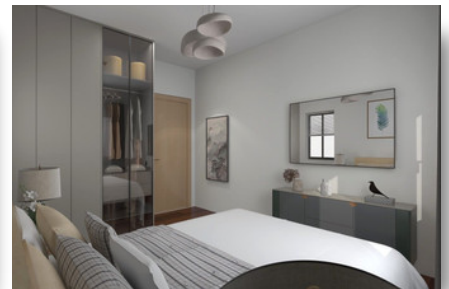
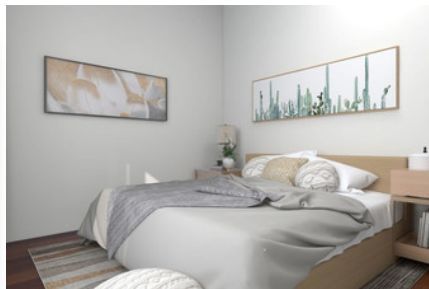


MODERN APARTMENT IN KATO POLEMIDIA - 2 BEDROOM

#2264

€285,000 + VAT



 **Bedrooms: 2**

 **Bathrooms: 2**

 **Covered: 75m²**

 **Covered veranda: 19.45m²**

 **Status: Under construction**

 **Energy efficiency rating: A**



Grigori Afxentiou 8A,
4005, Mesa Geitonia
Limassol

sales@quastilo.com
+357 95 727 000
quastilo.com



P R O P E R T Y F O R S A L E

MODERN APARTMENT IN KATO POLEMIDIA - 2 BEDROOM

OVERVIEW

 Limassol, Kato Polemidia  Apartment  2264

DESCRIPTION

A new project inspired by modern architecture with functional design, comprising: One three-level residential building with six modern independent apartments. Located in a quiet neighborhood, in Polemidia area, with easy access to highway and 3.5km from Casino City of Dreams, Golf, My Mall and close to all amenities. Each apartment boasts stunning attention to detail, modern concept, Italian kitchens, two parking, storage, high quality materials and finishes, energy efficiency and much more! Don't miss this opportunity to own this property, that can bring you, either an income with high rental returns or a permanent home.

FACILITIES

Aircondition, Provision	Parking, Covered	Elevator
Storage	Solar water heater	Solar photovoltaic panels

FEATURES

Thermal insulation	Easy access to highway	Fitted wardrobes
Pressurized water system	City view	Open plan
Double glazing	Guest WC	Veranda
Quiet area	Rental potential	Modern design
Sea view	Near amenities	

DISTANCES

Amenities: 100 m	Airport: 50 km	Sea: 4 km
Public transport: 100 m	Schools: 500 m	Resort: 3.5 km



Grigori Afxentiou 8A,
4005, Mesa Geitonia
Limassol

sales@quastilo.com
+357 95 727 000
quastilo.com



P R O P E R T Y F O R S A L E