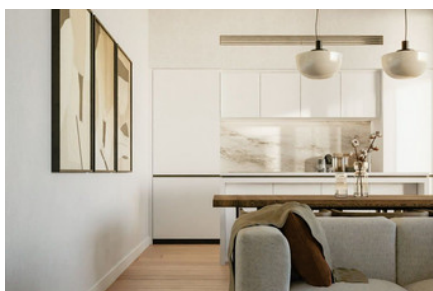
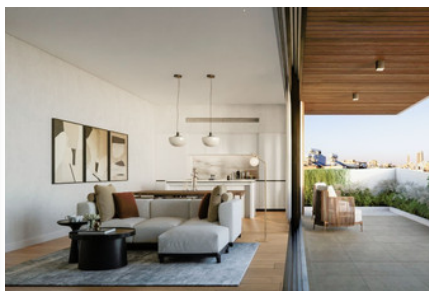
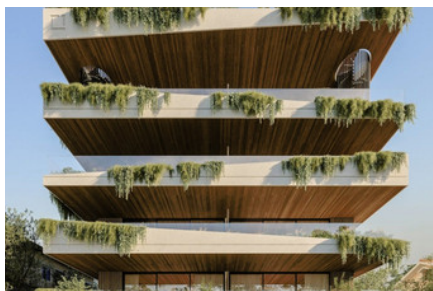


MODERN PENTHOUSE APARTMENT IN HISTORICAL CENTER - 3 BEDROOM

#2247

€935,000 + VAT



 Bedrooms: 3

 Bathrooms: 2

 Covered: 157m²

 Covered veranda: 41m²

 Status: Under construction

 Energy efficiency rating: A



Grigori Afxentiu 8A,
4005, Mesa Geitonia
Limassol

sales@quastilo.com
+357 95 727 000
quastilo.com



P R O P E R T Y F O R S A L E

MODERN PENTHOUSE APARTMENT IN HISTORICAL CENTER - 3 BEDROOM

OVERVIEW

 Limassol, Historical Center  Apartment  2247

DESCRIPTION

A premier residential complex of 17 apartments located in the desirable Agia Zoni neighborhood in Limassol. Situated conveniently near the bustling Gladstonos and Makariou streets, residents benefit from covered parking for security and ease. Top-tier units feature private pools for an exclusive touch of serenity. The vibrant local culture, encompassing bars, cafes, and entertainment, is just around the corner. Moreover, the historic city center, boasting a rich tapestry of cultural and architectural wonders, is a brief 10-minute walk away. With a seamless blend of luxury, comfort, and accessibility, this project ensuring an unparalleled living experience in Limassol's heart.

FACILITIES

Aircondition, Provision	Heating, Provision	Parking, Covered
Pool, Private	Elevator	Solar water heater

FEATURES

Thermal insulation	Heart of city center	Fitted wardrobes
Double glazing	Veranda	CCTV, Provision
Rental potential	Luxury specifications	Modern design
Walking distance to beach	Near amenities	Roof garden

DISTANCES

Amenities: 100 m	Airport: 50 km	Sea: 1.5 km
Public transport: 100 m	Schools: 500 m	Resort: 1.5 km



Grigori Afxentiou 8A,
4005, Mesa Geitonia
Limassol

sales@quastilo.com
+357 95 727 000
quastilo.com



P R O P E R T Y F O R S A L E