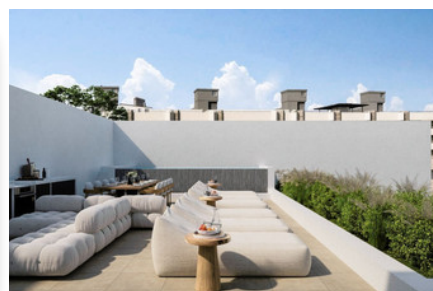
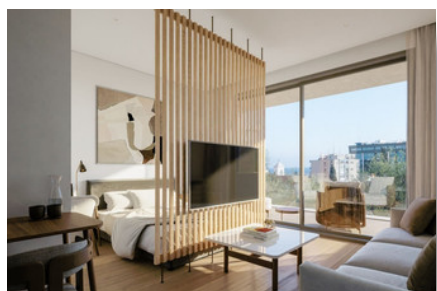
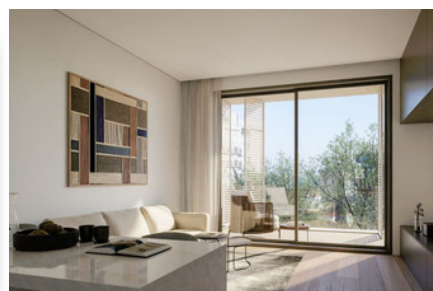
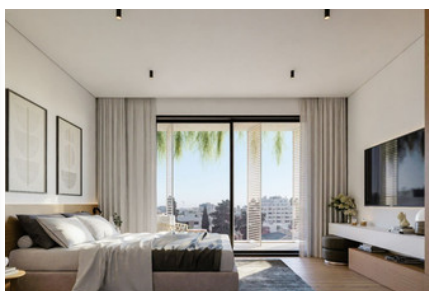
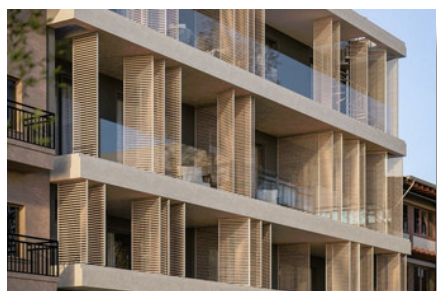


MODERN PENTHOUSE APARTMENT IN HISTORICAL CENTER - 2 BEDROOM

#2245

€718,000 + VAT



 Bedrooms: 2

 Bathrooms: 2

 Covered: 92m²

 Covered veranda: 37m²

 Status: Under construction

 Energy efficiency rating: A



Grigori Afxentiou 8A,
4005, Mesa Geitonia
Limassol



sales@quastilo.com
+357 95 727 000
quastilo.com



P R O P E R T Y F O R S A L E

MODERN PENTHOUSE APARTMENT IN HISTORICAL CENTER - 2 BEDROOM

OVERVIEW

 Limassol, Historical Center  Apartment  2245

DESCRIPTION

Luxury residential apartments in the heart of Limassol's historic old town. Situated 100 meters from the renowned Olympion Beach, this project is more than a residence – it's a lifestyle statement. An experience where history meets luxury. Nestled within the tranquil streets of Limassol's old town, residents enjoy the serenity of their surroundings while being a stone's throw from the city's vibrant life. This perfect balance ensures that whether you're seeking relaxation on our exclusive rooftop terrace with its shimmering pool or a stroll by the refreshing Mediterranean waters, every moment is elevated. Furthermore, with our turn-key solutions and an optional 5-year rental guarantee, convenience and peace of mind come standard. At this project, we don't just offer a home, we curate an unparalleled lifestyle tailored to meet your every need.

FACILITIES

Aircondition, Provision	Heating, Provision	Parking, Covered
Pool, Communal	Elevator	Solar water heater

FEATURES

Thermal insulation	Fitted wardrobes	Double glazing
Veranda	CCTV, Provision	Rental potential
Luxury specifications	Modern design	Walking distance to beach
Near amenities		

DISTANCES

Amenities: 100 m	Airport: 50 km	Sea: 100 m
Public transport: 100 m	Schools: 500 m	Resort: 200 m



Grigori Afxentiou 8A,
4005, Mesa Geitonia
Limassol

sales@quastilo.com
+357 95 727 000
quastilo.com



P R O P E R T Y F O R S A L E