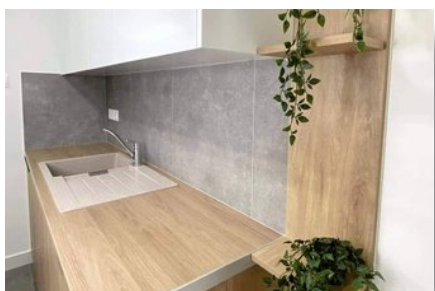
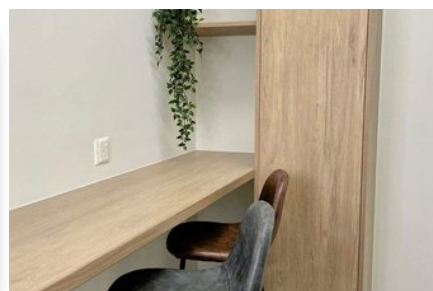
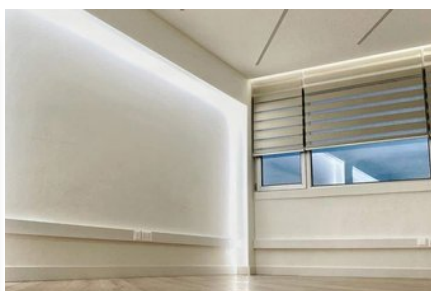
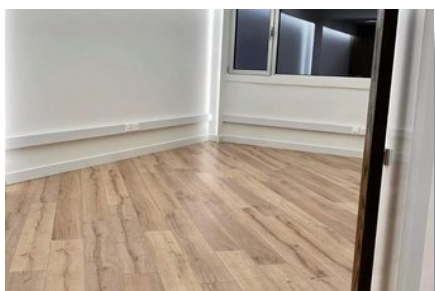


MODERN OFFICE IN  
CITY CENTER - 74M<sup>2</sup>

#2232

€2,600 /MONTH



**Covered:** 74m<sup>2</sup>



**Status:** Key ready



**Parking:** Covered



**Aircondition:** Split system



Grigori Afxentiou 8A,  
4005, Mesa Geitonia  
Limassol

sales@quastilo.com  
+357 95 727 000  
quastilo.com



P R O P E R T Y F O R R E N T

# MODERN OFFICE IN CITY CENTER - 74M<sup>2</sup>

## OVERVIEW

 Limassol, City Center  Office  2232

## DESCRIPTION

This modern office is located in Agios Nikolaos roundabout, with easy access from the highway (Linopetra Roundabout) and from the city main avenues (Kolonakiou Street, Griva Digeni Street, Makariou Avenue, Spyrou Kyprianou Avenue) making its location ideal for any business. Explore this fully renovated 72m<sup>2</sup> office space, thoughtfully designed with open plan space, toilet and kitchenette. Surrounded by all Amenities, Cafes, Shops, Banks, Restaurants.

## FACILITIES

Aircondition, Split system      Parking, Covered      Elevator

## FEATURES

Easy access to highway      Double glazing      Guest WC  
Modern design      Near amenities



Grigori Afxentiou 8A,  
4005, Mesa Geitonia  
Limassol

sales@quastilo.com  
+357 95 727 000  
quastilo.com



P R O P E R T Y   F O R   R E N T