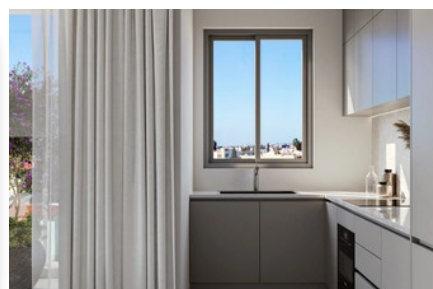
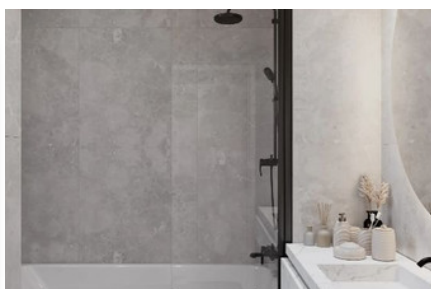
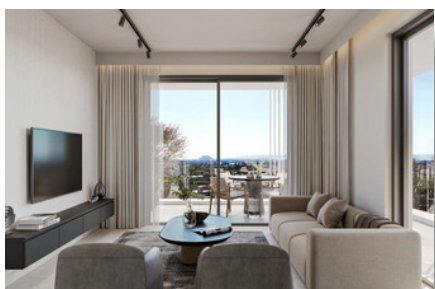
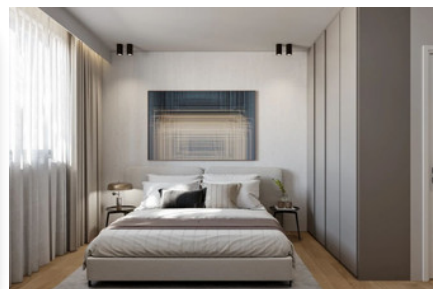


MODERN PENTHOUSE APARTMENT IN YPSONAS - 2 BEDROOM

#2229

€320,000 + VAT



 Bedrooms: 2

 Bathrooms: 2

 Covered: 77m²

 Covered veranda: 44m²

 Status: Under construction

 Energy efficiency rating: A



Grigori Afxentiou 8A,
4005, Mesa Geitonia
Limassol

sales@quastilo.com
+357 95 727 000
quastilo.com



P R O P E R T Y F O R S A L E

MODERN PENTHOUSE APARTMENT IN YPSONAS - 2 BEDROOM

OVERVIEW

 Limassol, Ypsonas  Apartment  2229

DESCRIPTION

This modern project is located in a newly built neighborhood at Ypsonas, a rapidly emerging and highly promising area in Limassol. Situated next to the local high street, it offers convenient access to the city center and a plethora of amenities just outside its doorstep. It consists of eight apartments, including five 1-bedroom and three 2-bedroom apartments, spread across three floors. Spacious internal and external areas, Class A Energy Efficiency, stylish design, high-quality materials, and finishes in a unique residential project. Excellent choice for residence or investment.

FACILITIES

| | | |
|-------------------------|--------------------|----------|
| Aircondition, Provision | Parking, Covered | Elevator |
| Storage | Solar water heater | |

FEATURES

| | | |
|--------------------|------------------|--------------------------|
| Thermal insulation | Fitted wardrobes | Pressurized water system |
| City view | Double glazing | Veranda |
| Quiet area | Rental potential | En suite shower |
| Modern design | Sea view | Near amenities |

DISTANCES

| | | |
|--------------------------------|-----------------------|-----------------------|
| Amenities: 100 m | Airport: 50 km | Sea: 2.5 km |
| Public transport: 100 m | Schools: 500 m | Resort: 2.5 km |



Grigori Afxentiou 8A,
4005, Mesa Geitonia
Limassol

sales@quastilo.com
+357 95 727 000
quastilo.com



P R O P E R T Y F O R S A L E