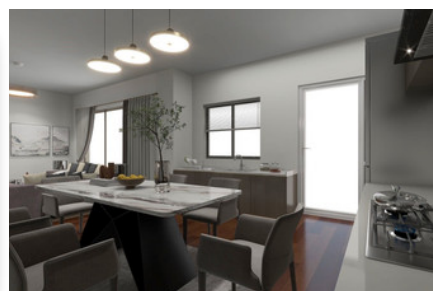
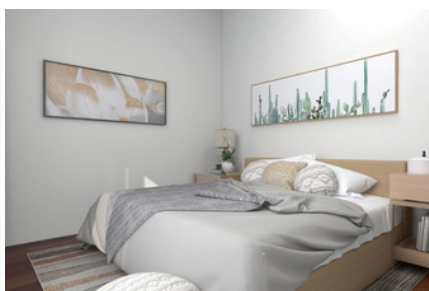


MODERN PENTHOUSE
APARTMENT IN KATO
POLEMIDIA - 3
BEDROOM

#2155

€357,000 + VAT



 Bedrooms: 3

 Bathrooms: 2

 Covered: 91m²

 Covered veranda: 21.5m²

 Status: Under construction

 Energy efficiency rating: A



Grigori Afxentiou 8A,
4005, Mesa Geitonia
Limassol

sales@quastilo.com
+357 95 727 000
quastilo.com



P R O P E R T Y F O R S A L E

MODERN PENTHOUSE APARTMENT IN KATO POLEMIDIA - 3 BEDROOM

OVERVIEW

 Limassol, Kato Polemidia  Apartment # 2155

DESCRIPTION

A new project inspired by modern architecture with functional design, comprising: One three-level residential building with six modern independent apartments. Located in a quiet neighborhood, in Polemidia area, with easy access to highway and 3.5km from Casino City of Dreams, Golf, My Mall and close to all amenities. Each apartment boasts stunning attention to detail, modern concept, Italian kitchens, two parking, storage, high quality materials and finishes, energy efficiency and much more! Don't miss this opportunity to own this property, that can bring you, either an income with high rental returns or a permanent home.

FACILITIES

Aircondition, Provision	Parking, Covered	Elevator
Storage	Solar water heater	Solar photovoltaic panels

FEATURES

Thermal insulation	Easy access to highway	Fitted wardrobes
Pressurized water system	Open plan	Double glazing
Guest WC	Veranda	Quiet area
Rental potential	Modern design	Near amenities
Roof garden		

DISTANCES

Amenities: 100 m	Airport: 50 km	Sea: 4 km
Public transport: 100 m	Schools: 500 m	Resort: 3.5 km



Grigori Afxentiou 8A,
4005, Mesa Geitonia
Limassol

sales@quastilo.com
+357 95 727 000
quastilo.com



P R O P E R T Y F O R S A L E