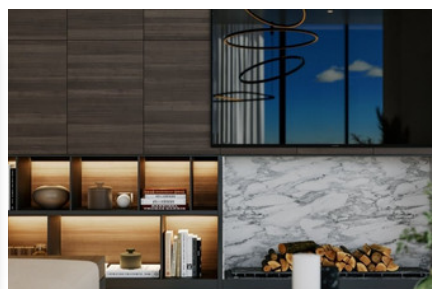
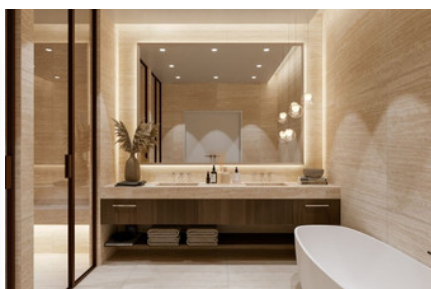
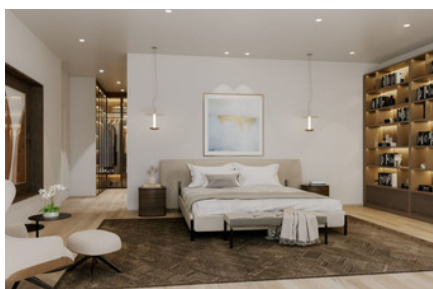
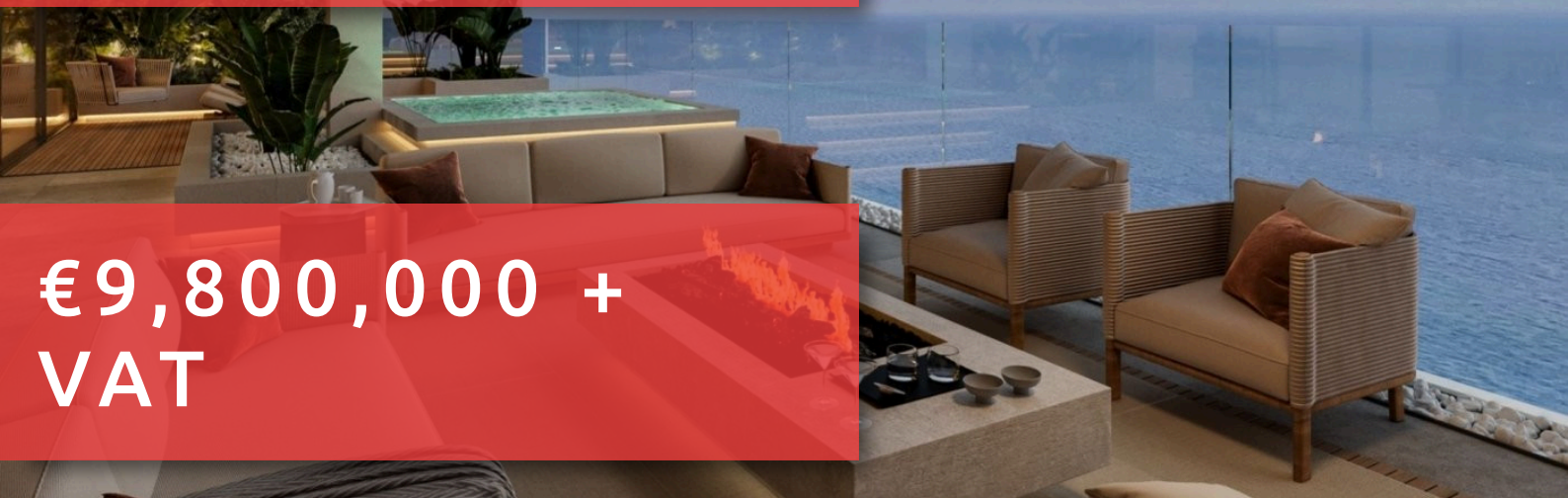


BEACHFRONT PENTHOUSE APARTMENT IN LIMASSOL - 5 BEDROOM

#2150


€9,800,000 + VAT



 Bedrooms: 5

 Bathrooms: 5

 Status: Key ready

 Floor: Penthouse



Grigori Afxentiu 8A,
4005, Mesa Geitonia
Limassol

sales@quastilo.com
+357 95 727 000
quastilo.com



P R O P E R T Y F O R S A L E

BEACHFRONT PENTHOUSE APARTMENT IN LIMASSOL - 5 BEDROOM

OVERVIEW



Limassol, Mouttagiaka Tourist Area



Apartment



2150

DESCRIPTION

Live the extraordinary life on the Mediterranean coast surrounded by tranquil landscaped gardens, outdoor pools, a large spa and everything you desire for a privileged lifestyle. In the world of upscale residences, this project stands out for its superior design, superb location, legendary service and exclusive amenities, which together create a whole that is far greater than the sum of its parts. An endless tranquility that is yours. The iconic tower consists of 182 residences, including 1-, 2- and 3-bedroom apartments. The open floor plan and spacious private terraces make you feel like you are living on a private superyacht, with endless panoramic views of the picturesque Limassol coastline and the Mediterranean Sea.

FACILITIES

Aircondition, Central system

Heating, Central

Parking, Covered

Pool, Communal

Indoor pool, Communal

Spa

Sauna

Gated complex

Landscaped garden

Solar water heater

Clubhouse

FEATURES

Easy access to highway

Double glazing

Luxury specifications

Modern design

Sea view

Sea front

Walking distance to beach

Near amenities

DISTANCES

Amenities: 100 m

Airport: 50 km

Sea: 50 m

Public transport: 100 m

Schools: 1 km

Resort: 50 m



Grigori Afxentiou 8A,
4005, Mesa Geitonia
Limassol

sales@quastilo.com
+357 95 727 000
quastilo.com



P R O P E R T Y F O R S A L E