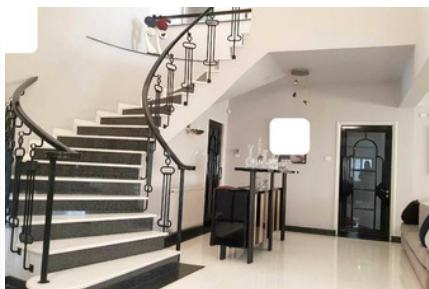


DETACHED HOUSE IN
POTAMOS
GERMASOGEIAS - 4
BEDROOM

#2133

€1,300,000



 Bedrooms: 4

 Bathrooms: 4

 Covered: 329m²

 Plot: 511m²

 Status: Resale

 Parking: Covered



Grigori Afxentiou 8A,
4005, Mesa Geitonia
Limassol

sales@quastilo.com
+357 95 727 000
quastilo.com



P R O P E R T Y F O R S A L E

DETACHED HOUSE IN POTAMOS GERMASOGEIAS - 4 BEDROOM

OVERVIEW



Limassol, Germasogeia Tourist Area



Detached House



2133

DESCRIPTION

Located in Potamos Germasogeias, Papas area, in Limassol, just 10 minutes walking distance from the beachfront and 10 minutes driving distance from Limassol city center and Marina. This detached house consists of 3 level. The internal covered area is 329m² and sits on 511m² of plot. On the ground level there is a spacious dining and living room area with guest toilet and a separate kitchen area with sitting area. On the first level there are four bedrooms, en-suite shower on the master bedroom, and main bathroom. On the basement there is an open plan area with a bathroom, ideal to be converted into either as office space, or housemate room or guest room. An ideal choice for a comfortable family home!

FACILITIES

Aircondition, Split system

Heating, Central

Parking, Covered

Solar water heater

FEATURES

Easy access to highway

Fitted wardrobes

Guest WC

Veranda

Rental potential

En suite shower

Near amenities

Kitchen appliances



Grigori Afxentiou 8A,
4005, Mesa Geitonia
Limassol

sales@quastilo.com
+357 95 727 000
quastilo.com



P R O P E R T Y F O R S A L E