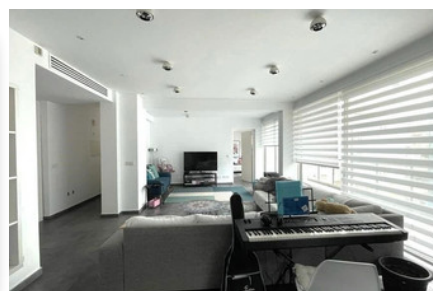
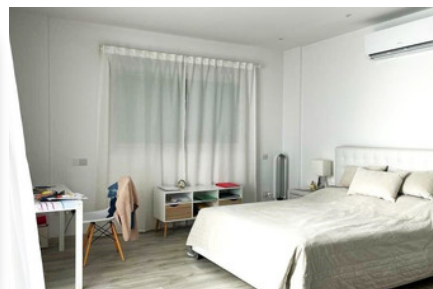


MODERN WHOLE FLOOR
PENTHOUSE IN NEAPOLI
- 4 BEDROOM

#2031

€890,000



 Bedrooms: 4

 Bathrooms: 4

 Covered: 160m²

 Covered veranda: 56m²

 Status: Resale

 Uncovered veranda: 62m²



Grigori Afxentiou 8A,
4005, Mesa Geitonia
Limassol

sales@quastilo.com
+357 95 727 000
quastilo.com



P R O P E R T Y F O R S A L E

MODERN WHOLE FLOOR PENTHOUSE IN NEAPOLI - 4 BEDROOM

OVERVIEW

 Limassol, Neapolis  Apartment  # 2031

DESCRIPTION

This modern whole floor penthouse has the advantage of a privileged location as it is situated in Neapoli area, only 5 minutes from the seafront of Limassol. The internal covered area is 222m², covered veranda:56m², uncovered veranda:62m² and roof garden 24m². It consists of 4 spacious bedrooms, 2 en-suite, main bathroom, open plan kitchen, dining, living area and guest toilet. Also has two storages and two covered parking. An amazing property you must definitely see!!!

FACILITIES

Aircondition, Central system Parking, Covered Elevator
Storage Solar water heater

FEATURES

Thermal insulation Easy access to main roads Fitted wardrobes
Pressurized water system Double glazing Guest WC
Veranda En suite shower Modern design
Near amenities

DISTANCES

Amenities: 100 m **Airport:** 60 km **Sea:** 500 m
Public transport: 100 m **Schools:** 1 km **Resort:** 500 m



Grigori Afxentiou 8A,
4005, Mesa Geitonia
Limassol

sales@quastilo.com
+357 95 727 000
quastilo.com



P R O P E R T Y F O R S A L E