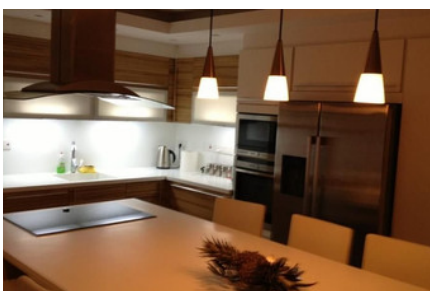


MODERN PENTHOUSE
APARTMENT IN
GERMASOGEIA - 2
BEDROOM

#1822

€400,000



 Bedrooms: 2

 Bathrooms: 2

 Covered: 87m²

 Covered veranda: 32m²

 Status: Resale

 Roof garden: 73m²



Grigori Afxentiou 8A,
4005, Mesa Geitonia
Limassol

sales@quastilo.com
+357 95 727 000
quastilo.com



P R O P E R T Y F O R S A L E

MODERN PENTHOUSE APARTMENT IN GERMASOGEIA - 2 BEDROOM

OVERVIEW

 Limassol, Germasogeia  Apartment  1822

DESCRIPTION

This modern penthouse is located in Germasogeia, Limassol, close to all amenities. It consists of 2 bedrooms, walking wardrobe and jacuzzi in the master bedroom, open plan kitchen, living area and main bathroom. Covered veranda and roof garden with beautiful views, covered parking, storage and common swimming pool. All electrical appliances (NEFF) - electrical shutters - electric blinds - roof concealed inverter type air conditions (DAKIN) - hydro massage & aero massage jacuzzi - rain shower (GROHE) - double glazed windows - all modern furniture in all areas - internet receiver - water cleaning and limescale remove system - solar panel for water heating - 2 tone water tank - roof false ceilings with spot lights & hidden lighting - video entry phone - electric central heating - barbeque on balcony - Title deeds. Don't miss this opportunity to own this lovely penthouse.

FACILITIES

Aircondition, Central system	Heating, Central	Parking, Covered
Pool, Communal	Elevator	Storage
Solar water heater		

FEATURES

Fitted wardrobes	Shutters, electric	Double glazing
Roller blinds	Rental potential	Luxury specifications
Modern design	Near amenities	Jacuzzi
Barbeque	Roof garden	Kitchen appliances

DISTANCES

Amenities: 200 m	Airport: 60 km	Sea: 3 km
Public transport: 100 m	Schools: 500 m	Resort: 3 km



Grigori Afxentiou 8A,
4005, Mesa Geitonia
Limassol

sales@quastilo.com
+357 95 727 000
quastilo.com



P R O P E R T Y F O R S A L E