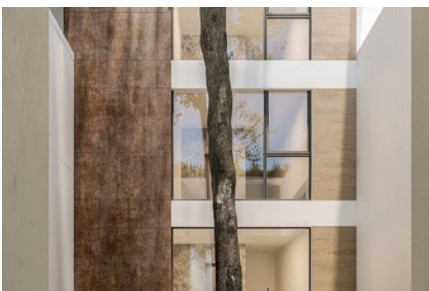


# UNIQUE GARDEN APARTMENT IN HISTORICAL CENTER - 3 BEDROOM

## #1442

### €739,000 + VAT



 Bedrooms: 3

 Bathrooms: 4

 Covered: 117.85m<sup>2</sup>

 Covered veranda: 24.4m<sup>2</sup>

 Status: Under construction

 Floor: Ground floor



Grigori Afxentiou 8A,  
4005, Mesa Geitonia  
Limassol

sales@quastilo.com  
+357 95 727 000  
quastilo.com



P R O P E R T Y F O R S A L E

# UNIQUE GARDEN APARTMENT IN HISTORICAL CENTER - 3 BEDROOM

## OVERVIEW

 Limassol, Historical Center  Apartment  1442

## DESCRIPTION

Definitely is one of the finest project in the middle of Limassol's city center. This magnificent gated complex, graced by large windows, open space living and luxury common amenities, is a haven for enjoying Limassol's special vibe, a city constantly on the outlook for better living. Excellent residential area close to the beach and city amenities. Ideal investors, couples and young families who are looking for luxury living while enjoying a very achievable return on their investment.

## FACILITIES

Aircondition, Provision	Heating, Provision	Parking, Covered
Indoor pool, Communal	Elevator	Gym
Sauna	Storage	

## FEATURES

Thermal insulation	Heart of city center	Easy access to main roads
High ceilings	Fitted wardrobes	Entrance gate
Courtyard	Pressurized water system	Semi-solid parquet flooring
Double glazing	Guest WC	Veranda
Marble flooring	Rental potential	Luxury specifications
Modern design	Near amenities	

## DISTANCES

<b>Amenities:</b> 100 m	<b>Airport:</b> 60 km	<b>Sea:</b> 300 m
<b>Public transport:</b> 200 m	<b>Schools:</b> 100 m	<b>Resort:</b> 500 m



Grigori Afxentiou 8A,  
4005, Mesa Geitonia  
Limassol

sales@quastilo.com  
+357 95 727 000  
quastilo.com



P R O P E R T Y F O R S A L E